

For Openline:

Requirements:

- Laptop na may **miniPCle** at willing kayong buksan or bili kayo nitong **usb to miniPCle** katulad ng nasa baba

Software: <http://www.mediafire.com/file/a0ml6mvx1el5vud/modemkoto.7z>

Driver: <https://www.mediafire.com/?evs2vgy9hm34uac>



INSTRUCTIONS:

1) Disassemble ang router at kunin ang Module.



2) Ikabit ang router module sa disassemble na laptop or ikabit sa usb to miniPCle connector.

3) Download mo yung software at driver.

4) Install proper driver **at tandaan mo kung ano ang ComPort number ng DIAG nya importante eto.**

5) Run mo MF823_unlock.cmd at basahin maigi ang nakasulat tapos ilagay mo ang **TAMANG DIAG COMPORT** na nakita mo kanina.

Note: Walang signal yung SMART pero sa iba meron, in my own opinion 1800mhz ang frequency na kailangan para magkasignal si SMART. Modified kasi yung modem sa Globe kaya nakalock yung frequency sa 1800mhz na Globe lang ang meron. Nakadepende pa rin sa location kung magkakasignal yung SMART sa inyo.

For Debranding:

Requirements:

Download mo lang file pag debrand.

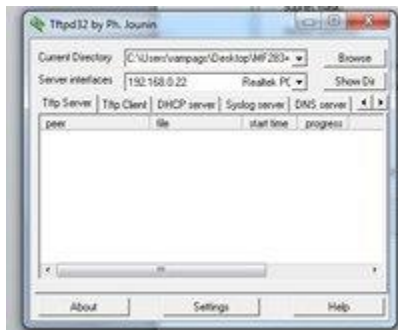
Debrand - <http://www.mediafire.com/file/a9klzpj2d2iv395/MF283+debrand.rar>

INSTRUCTIONS:

- 1) Turn off Modem.
- 2) Set static ip sa ganito



- 3) Open tftpd32.exe, follow mo lang pic.



- 4) Kapag ok na hold mo reset+WPS then turn on mo yung modem.
- 5) Kapag nagload na yung TFTP32, pwede mo nang bitawan yung reset+WPS



- 6) Wait mo lang mag reboot ang modem, hintayin mo rin umilaw ulit yung wifi at 4G/LTE (within 5-10 minutes)
- 7) Kapag umilaw na ang wifi at 4G/LTE, subukan mong i-access 192.168.0.1.
- 8) Kung ayaw ma-access, reset mo.

9) Kapag na-reset mo na, power led na lang ang iilaw. Turn off and On mo lang yung modem then debrand na yan.

10) Access mo ulit 192.168.0.1, then maglogin ka. Lagay mo lang admin.



11) Lagay mo yung current at mag-set ka nang panibagong password.



12) Good to go na yung modem mo. (Walang sim yan)



NOTE: Hindi na nagbabago yung kulay nang signal sa modem, always GREEN na sya. Kapag nagreset o reboot ka thru GUI, need mong i-manual On and Off yung Modem.

CREDITS: Sir Freddy3k, Revlon0007, SYMBI ANIZE, BundokTeams, PHCorner