



Assets Online (AOL)



# Trading Masters

A zero to hero full training of stock trading

---

5-Month Intensive Stock Trading  
Online Training and Workshop Program



Welcome to the **hardest game in the world**.  
Unfortunately, you're playing with some of the sharpest,  
fastest, most intelligent,  
well informed, stubbornly irrational and in many cases,  
unethical minds in the world.

You're up against the computer that can react faster than  
you.

The trader who has more experience than you.

The fund that has more money than you.

The insider that has more information than you.

The others that will misinform you.

The inner voice that will do its best to undo you.

**So, leave all your dreams of making quick and easy money,  
behind.**

**The first aim is survival.**

**Your absolute first goal is to learn how to stay in the game.**

You can only do this by mapping the territory.

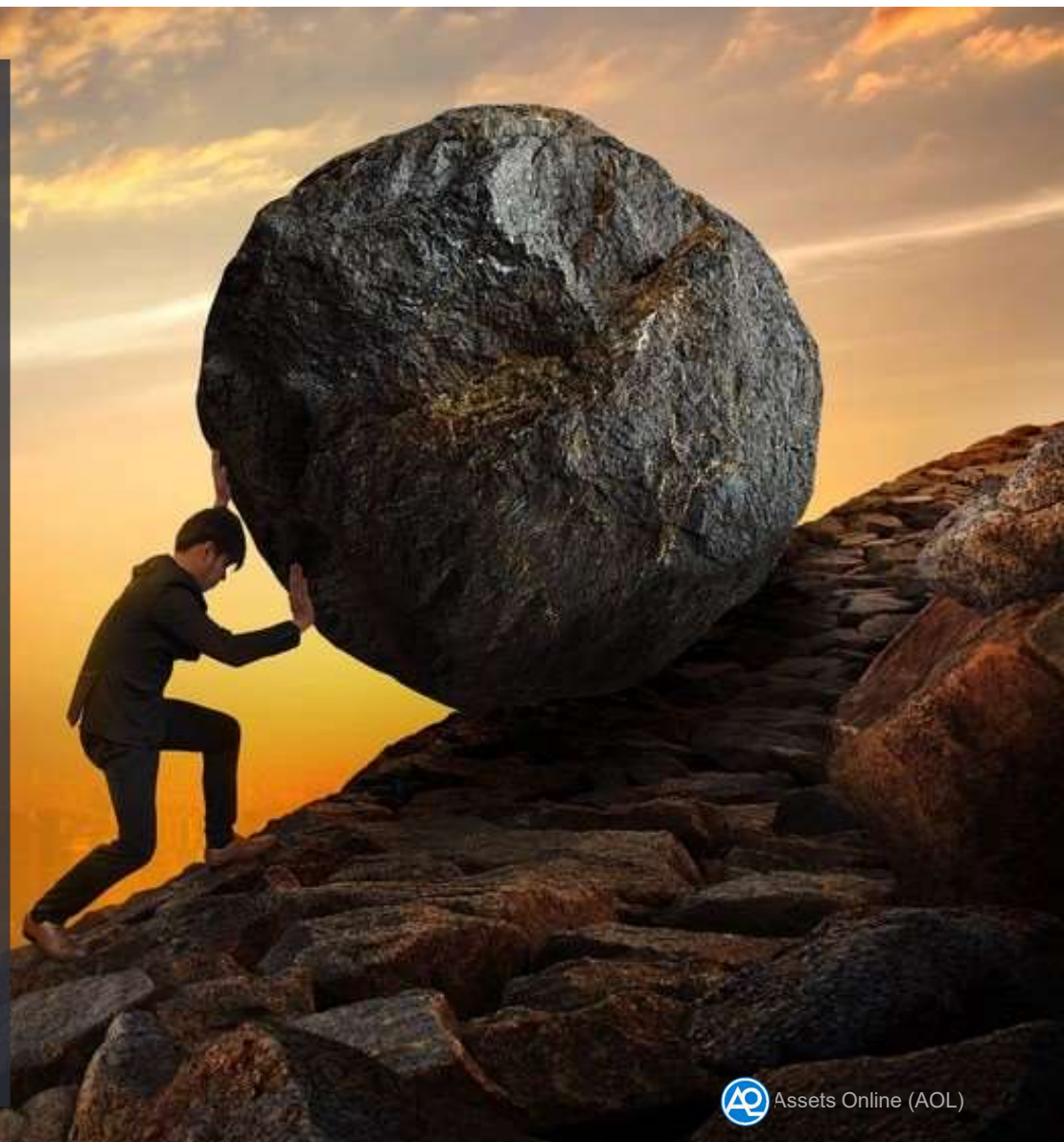
By understanding how the enemy thinks and acts.

By having a solid game plan.

And by picking your battles very, very carefully.

Ready to play?

- Trader Dante



## DISCLAIMER

This training program uses resources from various sites and groups. This system is not in any way affiliated with any group or organization. Any similarities with any system are purely coincidental in my knowledge and capacity.

All stock recommendations and comments are the opinion of presenter.

All investors are advised to conduct their own independent research into individual stocks before making a purchase decision. In addition, investors are advised that past stock performance is not indicative of future price action.

You should be aware of the risk involved in stock trading, and you use the material contained herein at your own risk. The analysis, ratings, and/or recommendations made by presenter do not provide, imply, or otherwise constitute a guarantee of performance.

The materials on this training are provided for information purpose only.

The presenter does not accept liability for your use of the training. The training is provided on an “as is” and “as available” basis, without any representations, warranties or conditions of any kind.

Assets Online (AOL)



# Trading Masters

A zero to hero full training of stock trading

---

## 5-Month Intensive Stock Trading Online Training and Workshop Program

---

TedTalk: Guide to Master Anything

Total Money Management for Financial Success

Stock Market 101

### Basic Fundamental and Sentiment Analysis

Comprehensive Technical Analysis for Marketing Timing

Building Complete Trading System Like a Pro

Essential Portfolio and Risk Management

Practical Trading Psychology

Backtesting

---

with 6 exclusive powerful set-ups  
to make money at any market environment

Framework | We do it professionally



# Framework and General Strategy



# Macro Analysis

## The Role Sentiment Analysis

Identifying where you are in the cycle

BID	ASK	LAST	T/VOL
37.85	37.85	3.18	
300	200	4,000	
65.40	66.00	65.40 ↗	59,480
0.2100	0.2190	0.2020 ↘	90,000
0.2800	0.3000	0.2950 ↗	10,000
0.94	0.95	0.94 ↘	1,514K
340.00	2,344.00	2,344.00 ↗	3,105
6.26	6.27	6.26 ↘	8,600
143.00	1,450.00	1,450.00 ↗	1,325
14.84	15.00		
7.40	7.42	7.40 ↘	29,800
1.82	1.90		
60.90	61.20	61.00 ↗	367,100
5.50	5.52	5.52 ↘	6,500
2.25	2.27	2.26 ↗	411,000
9.35	9.39		
0.3200	0.3250	0.3200 ↘	14,940K
1.60	1.62	1.60 ↘	432,000
232.80	234.00	232.80 ↗	41,900
81.90	82.00	81.85 ↘	82,180
11.50	11.80		
0.2550	0.2600	0.2550 ↘	58,140K
0.2650	0.2700	0.2650 ↘	7,660K
3.15	3.20	3.18 ↗	36,000
0.68	0.69		
7.53	7.68	7.50 ↘	699,600
7.50	7.54	7.54 ↗	30,000
15.40	15.86		
0.0120	0.0130	0.0120 ↗	284,100K

**pse** THE PHILIPPINE STOCK EXCHANGE, INC.

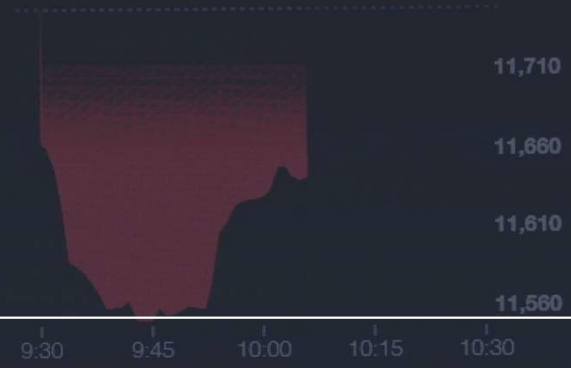
10:07:01 am  
CONTINUOUS TRADING

RATE = 47.129 VOL. = 111.20M

**IND INDEX**  
PSE Industrial Index

**11,645.14** ▼ **-106.63**  
**(-0.91%)**

Total Trades: **1,939**  
Total Value: **77,393,810**  
Total Volume: **9,749,230**



TOTAL 29  
UP 2 UNCH 5 DN 22

# The correlation of US 10YT and PSEI

MAJOR ASIAN MARKETS

Market	Value	Change
HANG SENG	9,333.19	-0.47%
NIKKEI	12,866.33	-0.92%
STI	11,645.14	-0.91%
TAIEX	8,476.99	-2.33%
KOSPI	1,925.24	-3.09%
SET	1,396.81	-2.76%
KLCI	1,820.31	-1.20%
IDX	4,762.65	-2.29%

CODE	BID	ASK	LAST
MAB	0.0130	0.0150	0.0140 ↗
MARC	1.67	1.70	1.70 ↗
MAXS	27.20	27.50	27.50 ↘
MBT	86.50	86.95	86.55 ↘
MCP	3.14	3.18	3.18 ↗
MED	0.52	0.53	0.53 ↗
MEG	4.43	4.44	4.44 ↗
MER	312.20	315.00	312.20 ↗
MG	0.2650	0.2750	
MPI	6.50	6.52	6.50 ↘
MRC	0.0850	0.0920	
MRSGI	3.85	3.87	3.85 ↘
MWC	26.50	26.55	26.50 ↘
MWIDE	6.45	6.50	6.50 ↘
NI	2.59	2.63	2.62 ↗
NIKL	4.73	4.74	4.75 ↗
NOW	2.75	2.77	2.77 ↗
ORE	1.16	1.24	
OV	0.0120	0.0130	0.0120 ↘
PA	0.0320	0.0330	0.0320 ↘
PBB	14.72	15.04	
PCOR	10.82	10.84	10.82 ↘
PF	205.20	210.00	
PGOLD	41.50	41.60	41.60 ↗
PHA	0.4200	0.4300	0.4300 ↗
PIP	3.26	3.30	3.30 ↗
PLC	1.13	1.14	1.14 ↗



**Why???**

Dahil sinabi ng  
**TECHNICALS**  
?



# It's all about **liquidity**

US is the **most sensitive** where most of big **global funds are moving**.

10-Year US Treasury Bond and PSEi is inversely correlated.

If the **10-year US Treasury Bond yield goes down**  
the **emerging market (example: PSEi) goes up**  
and vice versa.

Low interest rate in fixed income? Switch to high risk asset (stocks).

High interest rate in fixed income? Switch from high risk asset to fixed income.

10-Year US Treasury Bond vs. PSEi – Emerging Market



## Top 7\* **GDP Growth** among ASEAN Member

Country	2013	2014	2015	2016	2017	Average
Laos	8	7.6	7.3	7	-	7.475
Myanmar	8.4	8	7	5.9	6.7	7.2
Cambodia	7.4	7.1	7	7	-	7.125
<b>Philippines</b>	<b>7.1</b>	<b>6.1</b>	<b>6.1</b>	<b>6.9</b>	<b>6.7</b>	<b>6.58</b>
Vietnam	5.4	6	6.7	6.2	6.8	6.22
Malaysia	4.7	6	5.1	4.2	5.9	5.18
Indonesia	5.6	5	4.9	5	5.1	5.12

Source: <https://www.focus-economics.com/economic-indicator/gdp>



# Investment Strategy

PSEi goes **down**?

**Risk off**. Switch to **defensive** investing or **fixed income** investment

PSEi goes **up**?

**Risk on**. Switch to **aggressive** investing

## Investment Strategy in PSEi



### PERFORMANCE TABLE AS OF 11/23/2018

Fund Name	NAVPS	YTD	Fund Performance				Standard Deviation	Sharpe Ratio	Mgmt Fee	Expense Ratio	Tracking Error	Fund Size
			1 YR	3 YR	5 YR	Since Inception						
<b>Money Market Fund</b>												
FS ALFM Money Market Fund	120.34	2.33%	2.51%	1.75%	1.50%	2.32%	0.25%	2.26	0.50%	0.69%	0.32%	12,995.03
FS Philam Managed Income Fund	1.1774	1.72%	1.82%	0.48%	0.43%	1.24%	0.70%	-1.27	0.25%	1.29%	0.91%	644.48
FS Sun Life Prosperity Money Market Fund	1.2145	2.32%	2.53%	2.21%	1.50%	1.78%	0.10%	9.63	0.40%	0.51%	0.27%	21,716.35
Average		2.12%	2.29%	1.48%	1.14%	1.78%	0.35%	3.54	0.38%	0.83%	0.50%	11,785.29
<b>Bond Fund</b>												
FS ALFM Peso Bond Fund	342.45	1.60%	1.86%	2.01%	1.67%	6.04%	0.80%	0.78	1.00%	1.57%	0.73%	57,669.20
FS First Metro Save and Learn Fixed Income Fund	2.2048	-0.51%	-0.50%	-0.03%	0.15%	6.27%	1.88%	-0.60	1.75%	2.09%	4.81%	1,652.54
FS Philam Bond Fund	3.887	-4.02%	-4.10%	-0.75%	-0.74%	6.55%	3.51%	-0.77	1.50%	1.86%	2.23%	6,863.00
FS Philequity Peso Bond Fund	3.4859	-0.54%	-0.31%	0.29%	-0.10%	5.87%	2.75%	-0.57	1.00%	1.44%	4.30%	207.95
FS Sun Life Prosperity Bond Fund	2.7592	-0.62%	-0.72%	0.87%	0.20%	5.75%	3.80%	-0.24	1.15%	2.00%	2.43%	3,836.51
FS Sun Life Prosperity GS Fund	1.531	-1.19%	-1.32%	0.31%	-0.22%	3.94%	3.82%	-0.37	1.15%	2.05%	2.47%	240.84
Average		-0.88%	-0.85%	0.45%	0.16%	5.74%	2.76%	-0.30	1.26%	1.84%	2.83%	11,745.01
<b>Balanced Fund</b>												
FS ATRAM Philippine Balanced Fund	2.1796	-11.29%	-9.89%	0.13%	0.53%	3.45%	8.44%	-0.03	1.75%	2.52%	2.75%	1,150.78
FS First Metro Save and Learn Balanced Fund	2.499	-9.78%	-8.71%	-2.89%	-1.74%	8.52%	8.74%	-0.40	1.88%	3.67%	3.96%	1,732.45
FS PAMI Horizon Fund	3.4867	-11.01%	-9.61%	-0.85%	0.46%	6.23%	8.35%	-0.23	1.80%	2.61%	1.28%	1,019.49
FS Philam Fund	15.7236	-10.45%	-9.09%	-0.71%	0.42%	9.00%	8.15%	-0.24	2.00%	2.58%	1.35%	10,250.22
FS Sun Life Prosperity Balanced Fund	3.6346	-9.06%	-7.69%	0.31%	0.85%	7.72%	8.70%	-0.10	2.15%	2.79%	1.54%	11,242.80
Average		-10.32%	-9.00%	-0.80%	0.10%	6.98%	8.48%	-0.20	1.92%	2.83%	2.18%	5,079.15

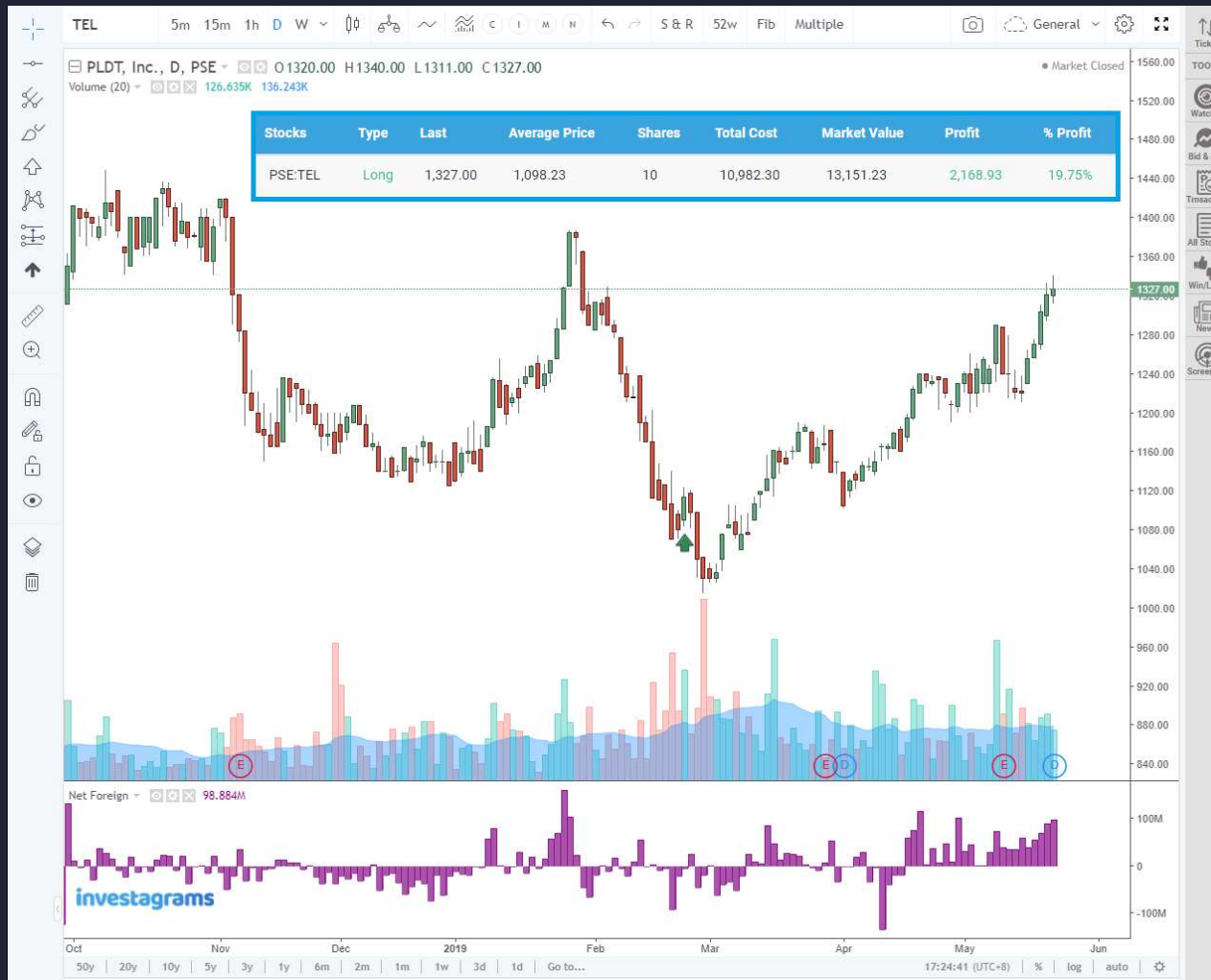
## Investment Strategy in PSEi



### PERFORMANCE TABLE AS OF 11/23/2018

Fund Name	NAVPS	Fund Performance					Standard Deviation	Sharpe Ratio	Mgmt Fee	Expense Ratio	Tracking Error	Fund Size
		YTD	1 YR	3 YR	5 YR	Since Inception						
<b>Equity Fund</b>												
FS ALFM Growth Fund	246.88	-15.81%	-13.83%	-0.28%	1.81%	7.85%	12.17%	-0.03	2.00%	2.81%	1.07%	6,986.17
FS ATRAM Alpha Opportunity Fund	1.3625	-14.68%	-14.24%	3.68%	2.31%	3.41%	15.57%	0.30	2.00%	3.97%	7.57%	436.43
FS ATRAM Philippine Equity Opportunity Fund	3.8365	-16.47%	-14.24%	0.60%	0.57%	9.62%	13.74%	0.09	2.00%	3.18%	3.77%	1,748.10
FS First Metro Save and Learn Equity Fund	5.1701	-14.02%	-12.17%	-1.41%	1.35%	13.47%	12.01%	-0.11	1.88%	3.53%	5.06%	4,361.92
FS Philam Strategic Growth Fund	506.54	-13.93%	-11.83%	-0.26%	1.15%	9.73%	12.08%	-0.06	2.00%	2.66%	1.54%	30,151.20
FS Philequity Dividend Yield Fund	1.2397	-11.72%	-10.26%	1.56%	N/A	6.39%	11.24%	0.09	1.50%	2.39%	3.05%	2,462.91
FS Philequity Fund	36.1287	-12.09%	-10.46%	1.96%	4.05%	16.35%	11.86%	0.14	1.50%	2.26%	2.57%	11,059.69
FS Sun Life Prosperity Equity Fund	4.0342	-11.93%	-9.95%	1.56%	2.27%	8.37%	12.72%	0.07	2.15%	3.05%	1.51%	10,261.84
Average		-13.83%	-12.12%	0.93%	1.93%	9.40%	12.67%	0.06	1.88%	2.98%	3.27%	8,433.53
<b>Equity Index Fund</b>												
FS PAMI Equity Index Fund	48.4741	-14.05%	-11.80%	1.34%	N/A	-1.47%	13.27%	0.07	1.50%	1.94%	0.99%	8,069.09
FS Philequity PSE Index Fund	4.8784	-14.02%	-11.85%	1.67%	3.76%	9.98%	13.35%	0.11	1.00%	1.81%	0.62%	3,547.69
FS Philippine Stock Index Fund	814.7	-13.86%	-11.70%	1.43%	3.77%	14.32%	13.46%	0.09	1.00%	1.78%	0.59%	12,037.05
FS Sun Life Prosperity Philippine Stock Index Fund	0.9389	-14.13%	-12.00%	1.47%	N/A	-2.43%	13.23%	0.10	1.15%	1.79%	0.59%	8,922.60
Average		-14.02%	-11.84%	1.48%	3.77%	5.10%	13.33%	0.09	1.16%	1.83%	0.70%	8,144.11

# Strategy: Know where the money flow





# How to Compare US10YT and PSEi overlay

- 1 Go to <https://www.investing.com/>
- 2 Search for **US10YT** (United States 10-Year Bond Yield)
- 3 Click **technical chart** then click **full screen mode**
- 4 Switch to **Line Chart**. Click **10Y**.
- 5 Compare or **Add Symbol (PSI)** – (PSEi Composite)

## Investment Strategy in PSEi: \$FMETF



# A BOUQUET OF INVESTMENTS JUST FOR YOU



FIRST METRO PHILIPPINE EQUITY  
EXCHANGE-TRADED FUND

Track the performance of the Philippine Stock Exchange Index (PSEi) by investing in the 30 blue-chip companies thru one stock, the country's first and only ETF, the First Metro Equity Exchange Traded Fund (FMETF)

Invest in the country's top 30 index stocks through **\$FMETF**



# Market Sentiments: Bullish or Bearish

## Bull Market



STC VPN 12:02 PM 24% 3 November 2017 9:13 AM Edit

Buying Power	21,703.21	Total Profit	4,732.81
Cash + Total	109,526.42	Total Profit %	5.70%

Stock	Position	Profit
BDO Long	80 135.00	874.33 8.07%
CEB Long	100 107.00	111.54 1.04%
DMC Long	700 15.34	257.95 2.40%
MAC Long	600 16.86	1,639.71 16.16%
MBT Long	120 86.60	345.05 3.31%
SECB Long	40 246.00	599.08 6.07%
SM Long	10 955.00	352.25 3.68%
SMPH	300	552.89

# Bull Market

the condition of a financial market of a group of securities in which prices are rising or are expected to rise.



# Bear Market

Associated with declines in an overall market or index.

Decline of 20 percent or more over a sustained period of time, typically two months or more.

Widespread pessimism and negative investor sentiment

PSEI

5m 15m 1h D W

S & R 52w Fib Multiple

General

Philippine Stock Exchange Index, 1D, PSE O7807.50 H7821.89 L7764.11 C7804.03

Volume (20) 7.205B 7.433B

EMA (200, close, 0) 7735.4716

Market Closed



investagrams

50y | 20y | 10y | 5y | 3y | 1y | 6m | 2m | 1m | 1w | 3d | 1d | Go to... 21:17:55 (UTC+8) | % | log | auto

Assets Online (AOL)

PSEI

5m 15m 1h D W Mo



C I M N



S & R

52w

Fib

Multiple

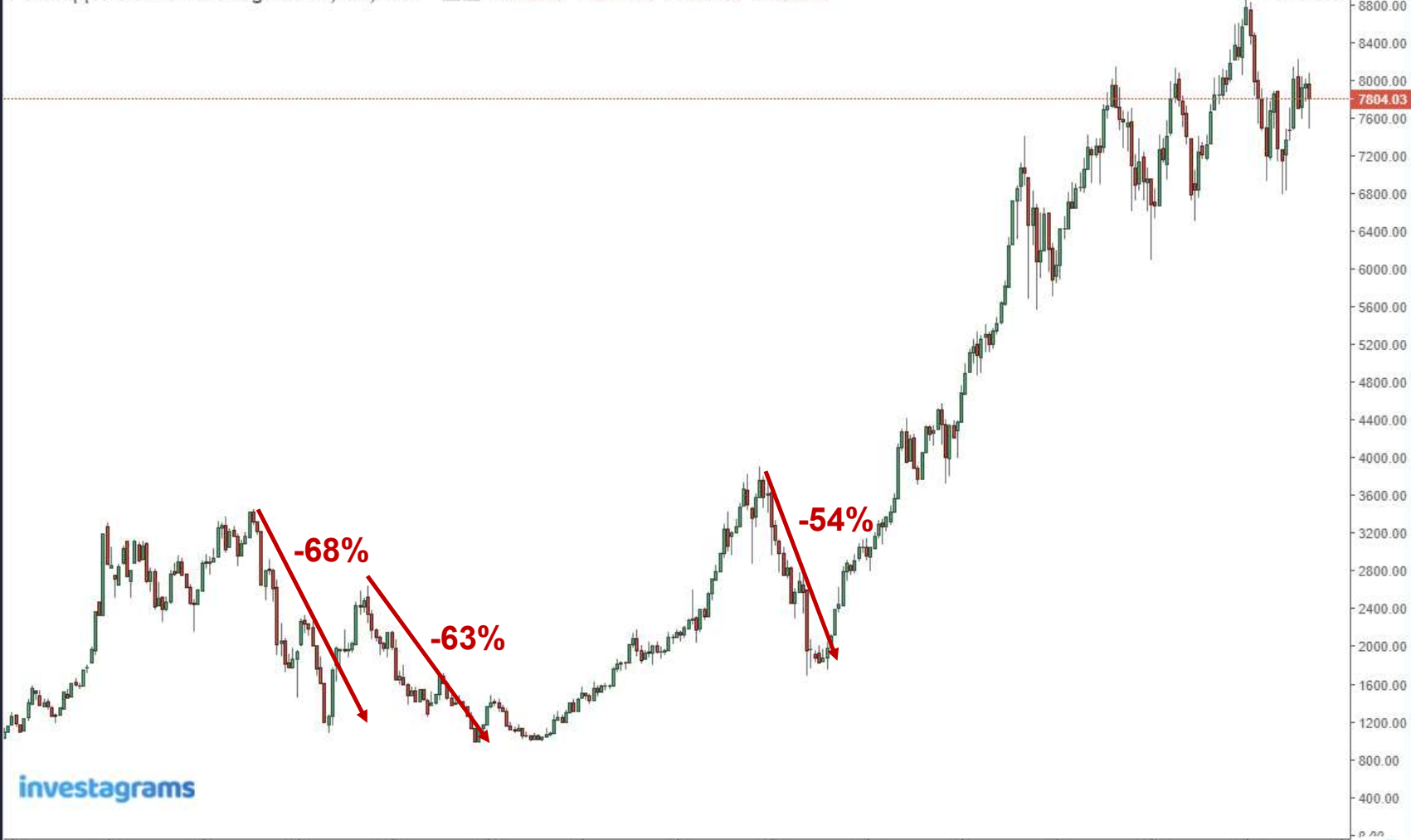


General



Philippine Stock Exchange Index, 1M, PSE O 7952.52 H 8077.51 L 7475.16 C 7804.03

Market Closed



investagrams

992 1994 1996 1998 2000 2002 2004 2006 2008 2010 2012 2014 2016 2018 2022  
50y 20y 10y 5y 3y 1y 6m 2m 1m 1w 3d 1d Go to...

21:33:04 (UTC+8) % log auto



Assets Online (AOL)



## Market Drop Parameters

Drop	Meaning
Down -5%	Pullback
Down -10%	Correction
Down -20%	Bear Market
Down -50%	Market Crash

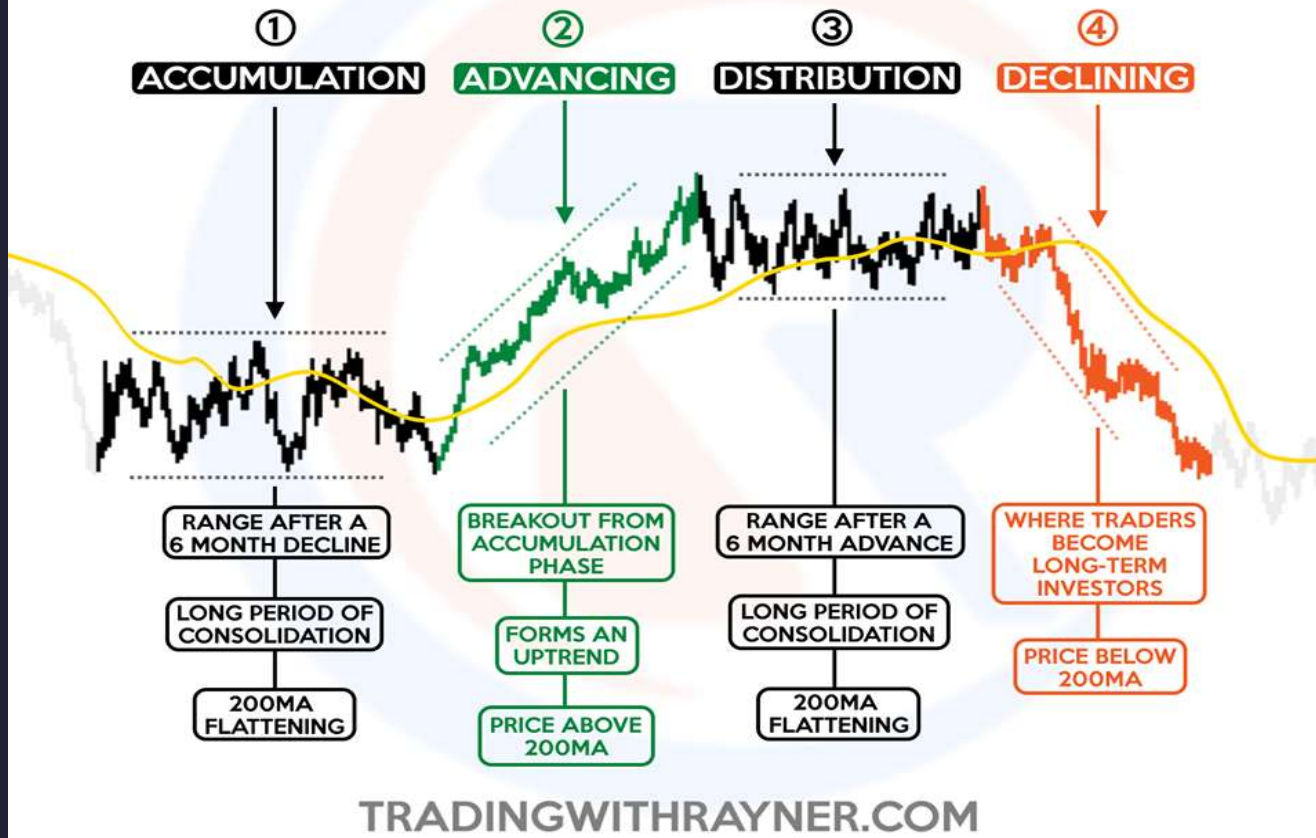
# Market Cycle:

Dow Theory / Wyckoff Theory



# FOUR MARKET PHASES

## EVERY TRADER MUST KNOW



# Wyckoff Theory





# Wyckoff Theory



# Wyckoff Theory



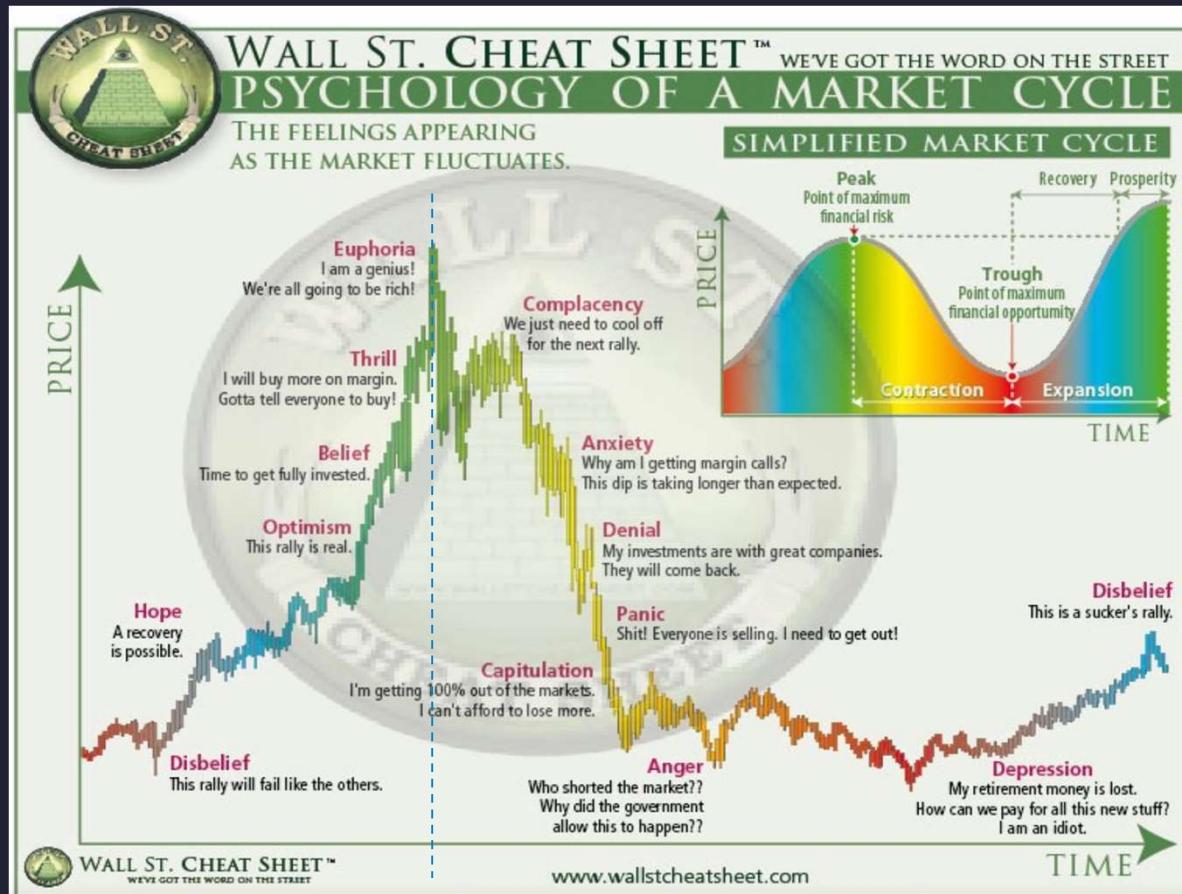
# Wyckoff Theory



# Tulip Bubble



# Psychology of Market Cycle



**Bullish (Left)**

**Bearish (Right)**

# The Emotional Cycle of Investing



@tradersdigestph published on Instagram.com, Aug 11, 2020 03:26:25 PM (PH Time)

PSE:NOW, D 2.15 ▲ +0.05 (+2.38%) O:2.14 H:2.22 L:2.12 C:2.15



Adapted from James E. Shildgen, Psychological Crowd Profile Analysis

## The Emotional Cycle of Investing



### **GREED**

The intense and excessive desire for money, wealth or power.

### **FEAR**

a state of distress caused by a sense of impending danger whether real or imaginary.

### **HOPE**

A feeling of desire or an expectation for something to happen.

### **DESPARATION**

a feeling of despair that results in rash and extreme behavior.

## Psychology of a Market Cycle



There is nothing new on Wall Street or in stock speculation. **What has happened in the past will happen again, and again, and again.** **This is because human nature does not change, and it is human emotion, solidly built into human nature, that always gets in the way of human intelligence.** Of this I am sure.

– Jesse Livermore



History repeat itself. That's not true.  
History doesn't repeat itself.

**WE repeat the history.**

Our goal, **our task is to escape from the past.**  
The things that we repeat is not history but it is us.  
**We can stop repeating history when we get to know it and we get to liberate ourselves from it.**

- Ambeth Ocampo

**THANK YOU**

**Q & A**

## References



COI Financiacial Group, 07-Mar, 2019, Rrading Strategies with Edward Lee: Passive Investing (Part 1 & 2)  
<https://youtu.be/JTLwe3AqKNE>  
<https://youtu.be/YsTWtkzhkCM>

Rayner Teo. 03-Dec, 2015. The 4 Stages of the Market Every Serious Trader Must Know  
<https://www.tradingwithrayner.com/the-best-trading-strategy-for-trading-trend-and-range/>

Psychology of a market cycle  
[www.wallstcheatsheet.com](http://www.wallstcheatsheet.com)

Caylum Trading Institute, The Emotional Cycle of Investing, Sentiment Analysis

Icons Pack  
<https://www.flaticon.com/>

Images credits to its owner.



Abraham Avila Jr.  
Founder, Assets Online (AOL)

For inquiries contact us:

	Site Name / URLs
<b>Website:</b>	<a href="https://aoltrading.com/">https://aoltrading.com/</a>
<b>Email:</b>	<a href="mailto:aol.trading888@gmail.com">aol.trading888@gmail.com</a>
<b>FB Page:</b>	<a href="https://www.facebook.com/AOLTrading">https://www.facebook.com/AOLTrading</a>
<b>FB Group:</b>	<a href="https://www.facebook.com/groups/philippinestockmarketessentials">https://www.facebook.com/groups/philippinestockmarketessentials</a>
<b>Personal FB:</b>	<a href="https://www.facebook.com/absavilajr">https://www.facebook.com/absavilajr</a>

