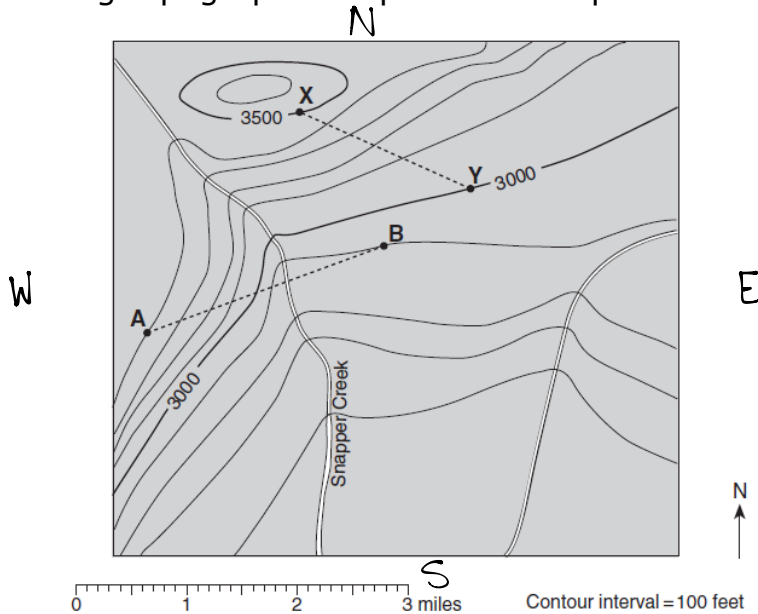


Topographic Map Reading Worksheet

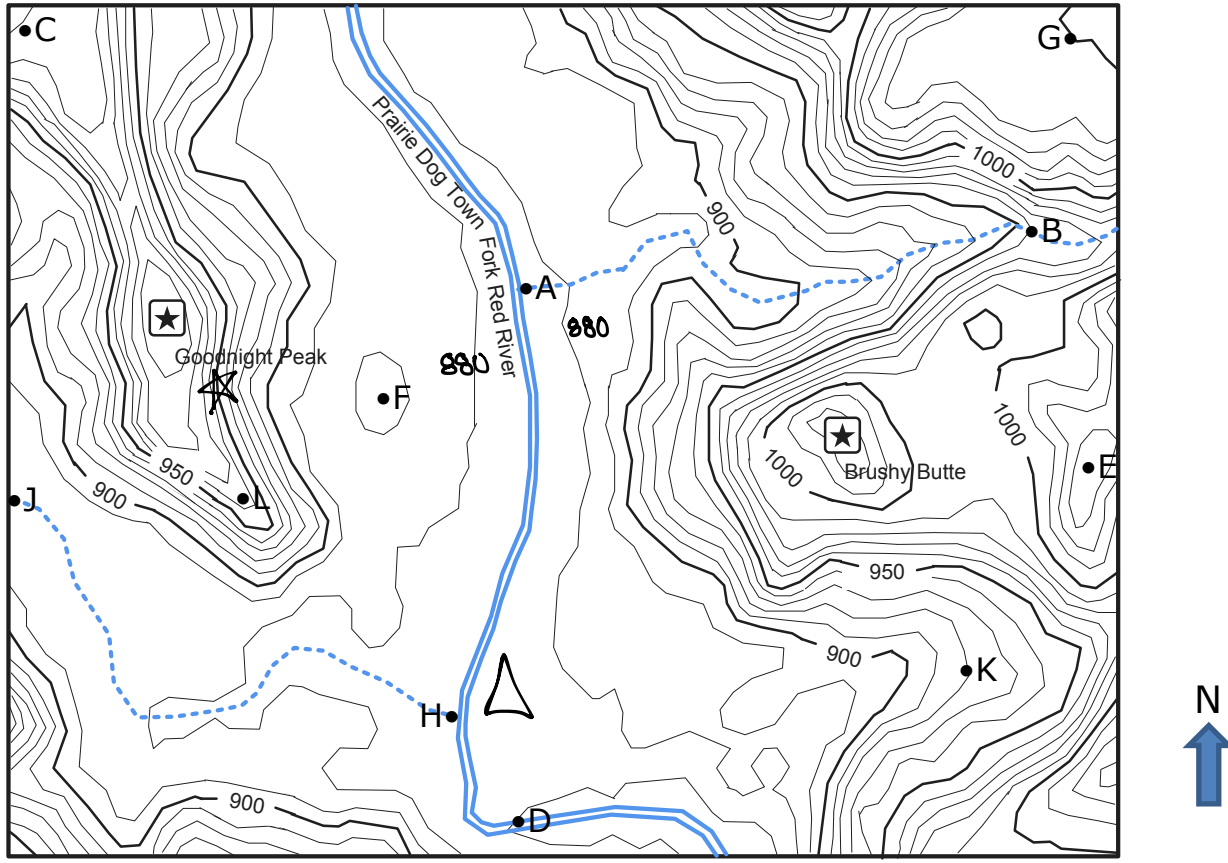
31
38

Use the following topographic map to answer questions 1-8.



1. What is the elevation at point A? 3400 ft
2. What is the elevation at point B? 2900 ft
3. What is the elevation at the point on line A-B where it crosses Snapper Creek?
2900-2800 ft
4. If you walked from point A to point B along line A-B, would you be walking downhill or uphill, or both? In what direction would you be walking? Explain your answer, stating the elevations at point A, Snapper Creek and point B.
You would be walking down hill going North East because the elevation of point A is 3400ft and the elevation of point B is 2900ft.
5. What is the elevation of the highest point shown on the map? 3600-3699 ft
6. What is the elevation at point X? 3500 ft
7. What is the elevation at point Y? 3000 ft
8. If you walked from point X to point Y along line X-Y, would you be walking downhill or uphill, or both? In what direction would you be walking? Explain your answer, stating the elevations at point X and point Y. You would be walking downhill because point X's elevation is 3500ft and the elevation of point Y is 3000ft. You would be walking East maybe slightly south East.

Use the following topographic map from Palo Duro Canyon State Park in west Texas to answer questions 9 - 33.



Contour Interval = 10 meters



9. What is the elevation of Goodnight Peak? 990-999 M
10. What is the elevation of Brushy Butte? 1020-1029 M
11. What is the elevation of point A? Around 885 M
12. What is the elevation of point B? 960 M
13. If you walked along the creek from point A to point B, what would be the total change in elevation? 75 M In what direction would you be walking? East
14. What is the elevation of point C? 990-999 M
15. What is the elevation of point D? 930 M
16. What is the elevation of point E? 1030-1039 M
17. What is the elevation of point F? 900-909 M

18. What is the elevation of point G? 1050M
19. What is the elevation of point H? Around 880M
20. What is the elevation of point J? Around 890M
21. If you walked along the creek from point H to point J, what would be the total change in elevation? 10M In what direction would you be walking? West
22. What is the lowest labeled point on the map? Point A
23. What is the highest labeled point on the map? Point G
24. In what direction is the river at the center of the map flowing? South
25. Put a small star on the map where the slope is the steepest.
26. Put a small triangle on the map where the slope is the flattest.
27. Is point K in a valley or a ridge? A ridge
28. Is point L in a valley or a ridge? A ridge
29. What is the distance from point A to point F, to the nearest tenth of a kilometer?
0.9 km
30. What is the distance from point H to point D, to the nearest tenth of a kilometer? 0.6km
31. What is the distance from point B to point E, to the nearest tenth of a kilometer? 1km
32. What is the distance from Goodnight Peak to point L, to the nearest tenth of a kilometer? 0.9km
33. If you could travel in time and visit the park shown on the map 100,000 years in the future, what changes do you think will have taken place to the elevations of Goodnight Peak and Brushy Butte? Explain your answer. They would have lower elevations because the earths plates move and cause mountains to move and become higher.