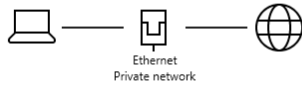


DISCLAIMER: This tutorial is compatible only for ZLT S10GV2.10.1 version. Do not proceed if the version is not compatible otherwise it will brick the modem

- Unang gagawin: Dapat may load ng sim na ilgay sa ZLTS10Gv2.10.1
- Next open Network and internet settings, then click change adapter options

Status

Network status



You're connected to the Internet

If you have a limited data plan, you can make this network a metered connection or change other properties.

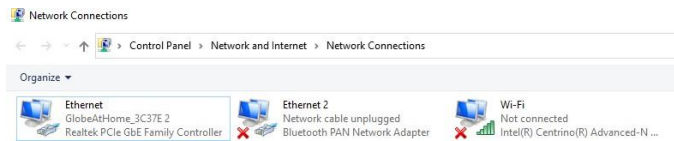
Ethernet 548 MB
From the last 30 days

Properties Data usage

Show available networks
View the connection options around you.

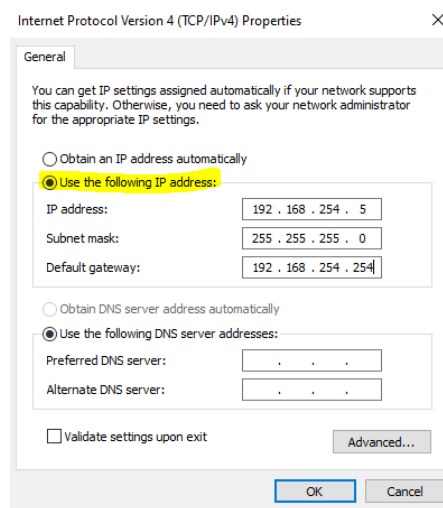
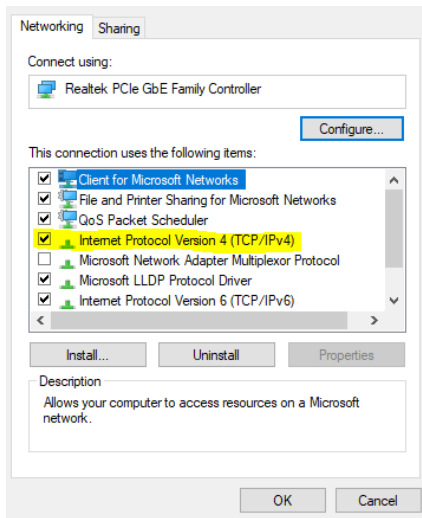
Advanced network settings

→ Change adapter options
View network adapters and change connection settings.



IMPORTANT: click "Ethernet" kung ikaw ay naka LAN cable at "wifi" naman kung ikaw ay naka wireless connection

- Next right click "Ethernet" (for LAN) or "wifi" (for wireless) then select properties and double click "Internet Protocol Version 4 (TCP/IPV4) and click "Use the following IP address" input the following in the box:
 1. 192.168.254.5
 2. 255.255.255.0
 3. 192.168.254.254



- Open firefox, go to dashboard's gateway address 192.168.254.254 then login: USER: user
PASSWORD: @l03e1t3
- After the login, press “alt + shift e” simultaneously or “F12”

The screenshot shows the ZTE dashboard interface. The Network Inspector is open, showing a list of network requests. The selected request is a POST to 'goform_get_cmd_process' with a status of 200 OK. The right-hand pane shows the response headers and request headers for this request.

Status	Method	Domain	File	Initiator	Type	Transferred	Size
200	POST	192.168.254.254	goform_get_cmd_process	require-jquery.js:10278...	html	233 B	21 B
200	POST	192.168.254.254	goform_get_cmd_process	require-jquery.js:10278...	html	955 B	743 B
200	POST	192.168.254.254	goform_get_cmd_process	require-jquery.js:10278...	html	1.04 KB	856 B
200	POST	192.168.254.254	goform_get_cmd_process	require-jquery.js:10278...	html	274 B	62 B
200	POST	192.168.254.254	goform_get_cmd_process	require-jquery.js:10278...	html	327 B	115 B
200	POST	192.168.254.254	goform_get_cmd_process	require-jquery.js:10278...	html	1.79 KB	1.58 KB
200	POST	192.168.254.254	goform_get_cmd_process	require-jquery.js:10278...	html	346 B	134 B
200	GET	192.168.254.254	icon_connection.png	img	png	cached	4.13 KB
200	POST	192.168.254.254	goform_get_cmd_process	require-jquery.js:10278...	html	233 B	21 B
200	POST	192.168.254.254	goform_get_cmd_process	require-jquery.js:10278...	html	274 B	62 B
200	POST	192.168.254.254	goform_get_cmd_process	require-jquery.js:10278...	html	327 B	115 B
200	POST	192.168.254.254	goform_get_cmd_process	require-jquery.js:10278...	html	346 B	134 B
200	POST	192.168.254.254	goform_get_cmd_process	require-jquery.js:10278...	html	1.80 KB	1.59 KB
200	POST	192.168.254.254	goform_get_cmd_process	require-jquery.js:10278...	html	233 B	21 B
200	POST	192.168.254.254	goform_get_cmd_process	require-jquery.js:10278...	html	274 B	62 B
200	POST	192.168.254.254	goform_get_cmd_process	require-jquery.js:10278...	html	327 B	115 B
200	POST	192.168.254.254	goform_get_cmd_process	require-iouen.js:10278...	html	346 B	134 B

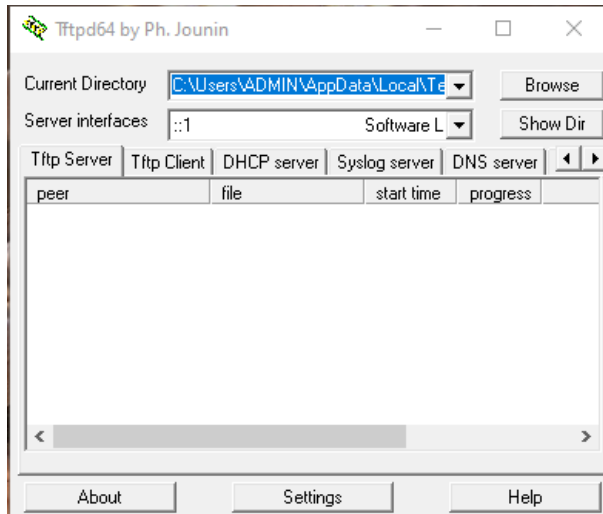
- Next, pili lang po ng isa sa mga lumabas na “goform_get_cmd_process” and click mo lang, my lababas na “RESEND” sa right side portion, click mo yan at piliin ang “edit and resend”.
- Edit mo ang POST http://192.168.254.254/goform/goform_get_cmd_process, palitan mo ang “get” ng “set”

The screenshot shows the 'New Request' dialog in the Network Inspector. The Method is set to POST and the URL is http://192.168.254.254/goform/goform_get_cmd_process. The Request Headers section shows the default headers for a browser request. The Request Body section contains the URL-encoded data: `isTest=false&cmd=wifi_coverage%2Cm_ssid_enable%2Cimei%2Cnetw`.

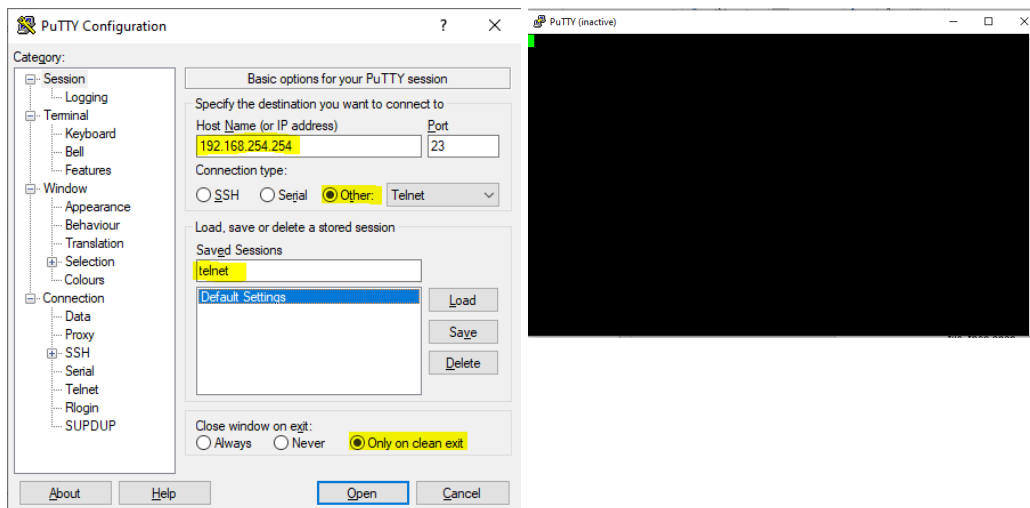
- Open mo ang downloaded na file (password: **gensh123**), extract mo ang laman nito, punta ka sa file ng CODE1 and open. Copy and paste mo ang file sa “Request Body” then click mo ang send

IMPORTANT: hayaan lang naka bukas ang dashboard, wag po natin e-exit.

- Open ang “tftpd64” na file, make sure naka administrator ka, allow access mo lang at hayaan lang naka bukas



- Open ang “putty” na file, make sure naka administrator ka, type mo sa “host name for IP address ang 192.168.254.254, tapos click ang other. Sa Saved Sessions type mo telnet or kung anong name ang gusto neo, then save lang. After ma save, click mo yung nagawa mong session file, then open. My lalabas na CMD command



- Open mo ang CODE2 sa loob ng file at copy mo lang ang nilalaman ng file at i-paste sa loob ng CMD command by clicking right click. Hintayin matapos ang flash, pag ok na balik ka sa Network and internet settings, then click change adapter options, punt ka sa “Internet Protocol Version 4 (TCP/IPV4) and click “Obtain an IP address automatically” and press ok

- HARD RESET DEVICE OR RESTOR FACTORY settings mo lang at VOILA!!! Openline na modem mo at my open acces kana rin sa APN

NOTE: I do not own this tutorial, my binago lang po akong code sa loob ng file para maging open ang access ng APN. CREDITS goes to the original discoverers. :)