

The image shows a title page for a user manual. It features a central grey rectangular area with a thin orange border at the top and bottom. The text is centered within the grey area.

**Windows MBox Viewer
User Manual**

1. OVERVIEW

Mbox Viewer (or mboxview) is Window Windows GUI based program to view mbox files such as Thunderbird Archives, Google mail archives or simple Eml files.

The mbox viewer is a simple but quite powerful email viewer that supports the following features:

1. Large file support > 4gb
2. Fast parsing of mbox archives
3. Quick access to all attachments
4. Preview picture attachments
5. Zoom in/out a picture
6. Export of single mail in Eml
7. Print all or multiple selected mails to CSV or Text or HTML or PDF files or send to PDF printer
8. Print single mail to Text or HTML or PDF file or send to PDF printer
9. Group all related mails as conversations
10. Print mail conversation/related mails group to CSV or Texts or HTML or PDF file or send to PDF printer
11. Open single or multiple selected mails or group of related mails in browser
12. Find user defined text in mail's message and highlight all occurrences
13. Search the date, subject, sender, cc, bcc message text, appendix text and names
14. Search for mails that didn't match the search criteria
15. Sort by date, from, to, subject, size and conversation groups
16. Support for mail's header fields and body encoded with different characters sets
17. Support for mail list editing capability to enable users to compose mail list by merging results of multiple searches and/or by merging one or more users selected mails
18. Ability to set Message Widow position to Bottom, Right or Left
19. Ability to merge/concatenate multiple archive files and remove duplicate mails
20. Ability to customize background colors of display panes and mail message
21. Ability to customize HTML/PDF mail header output

2. Installation

The executable and the source code can be downloaded from Sourceforge or Github.

<https://sourceforge.net/projects/mbox-viewer/files/>

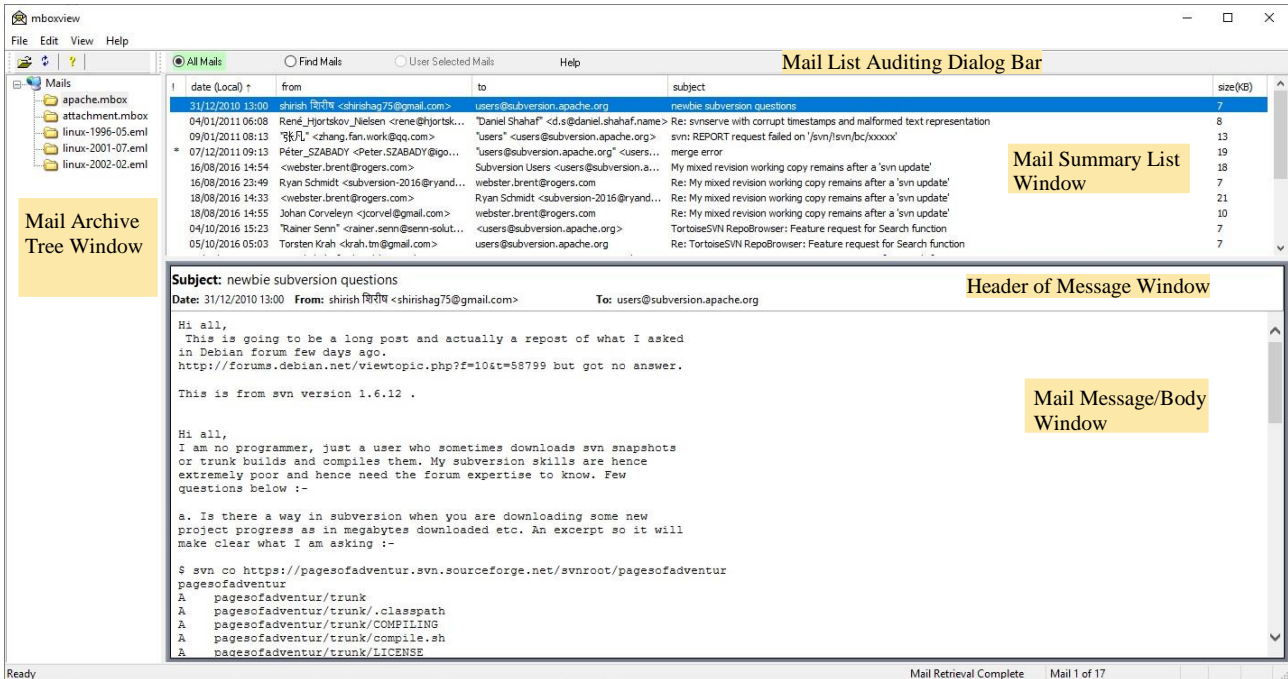
<https://github.com/eneam/mboxviewer/releases>

Download the executable package, the latest mbox-viewer.exe-v1.0.3.13 .zip, to the working directory and unzip. This will create the mbox-viewer-exe-v1.0.3.13 directory containing the stand-alone mboxview.exe executable, User Guide, the scripts sub-directory and ReleasePlusStackTrace sub-directory. No administrator privileges are needed to install and run the mbox viewer.

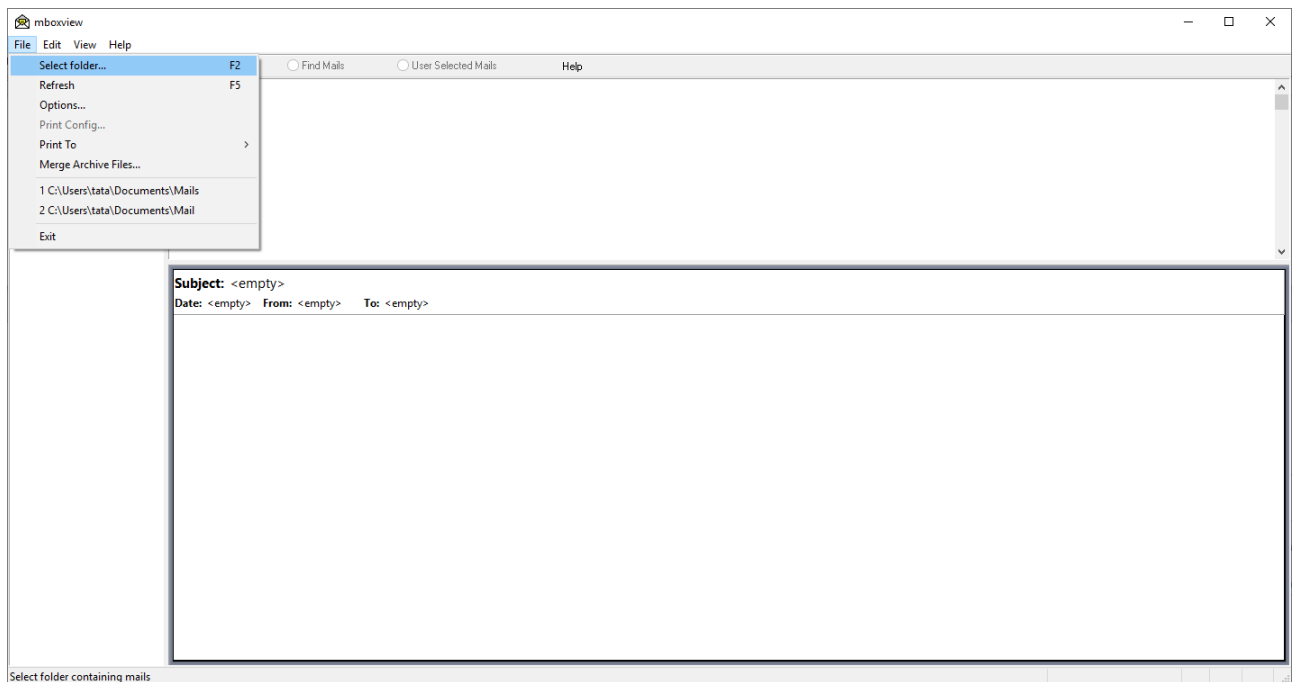
Review the HELP .txt file in case of the mbox viewer crash.

3. Basic Use Case

Double click the mboxview to start the viewer. The picture below shows the screen created by the mboxview after few steps performed by a user. Mail Archive, Summary and Message windows are initially blank after start-up. Steps to load a mail archive and display the content are described next.

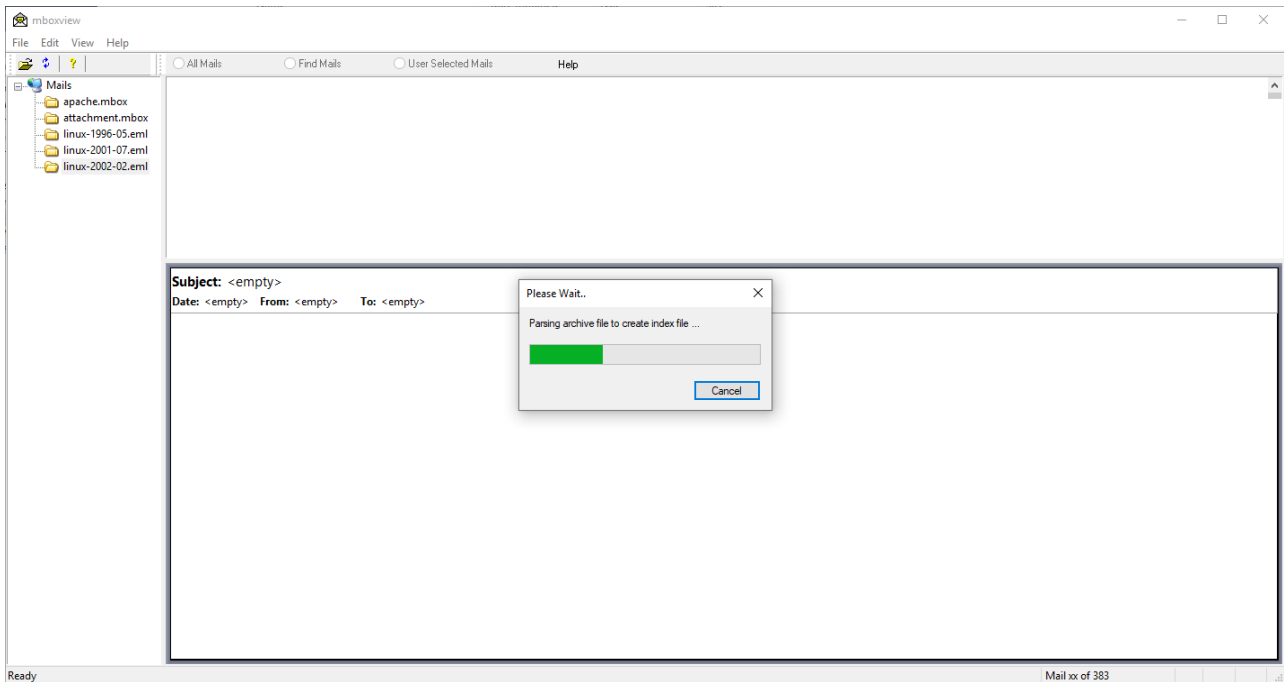


1. Click on the “File” to open the drop menu and then select the “Select folder...” option. Browse to the folder containing one or more mbox and/or eml mail archive files and select it. All valid mail archive files will appear in the Mail Archive Tree window.
Note that different “Select Folder” dialog can be configured via File → Options menu dialog.



- Left click on one of the archive files to load all mails within that archive. Progress bar will appear and automatically close after the selected archive is fully processed. Mail header information of each email will appear in the Summary window. Note that parsing of very large archive file may take some time since the mail archives are text files and every character has to be examined one by one.

However, subsequent loading of mails is done from the index file created by the mboxview during the initial parsing of the archive file and is much faster. The created index file contains content meta data of each mail in the archive file. i.e. the mail header information and the position of each mail within the mail file for quick access to the mail message/body. The index files have the .mboxview suffix.



- Left click on one of the mails in the Summary window to show the Message/Body of that email in the Message window. The mail retrieval state, total number of mails in the archive and the position of the selected mail within the archive is shown on the status bar. Opening a hyperlinks within an external browser is recommended since running Java or scripts or ActiveX controls is disabled in the internal browser to improve security.

