

CCS0021 LABORATORY

TECHNICAL ASSESSMENT 1

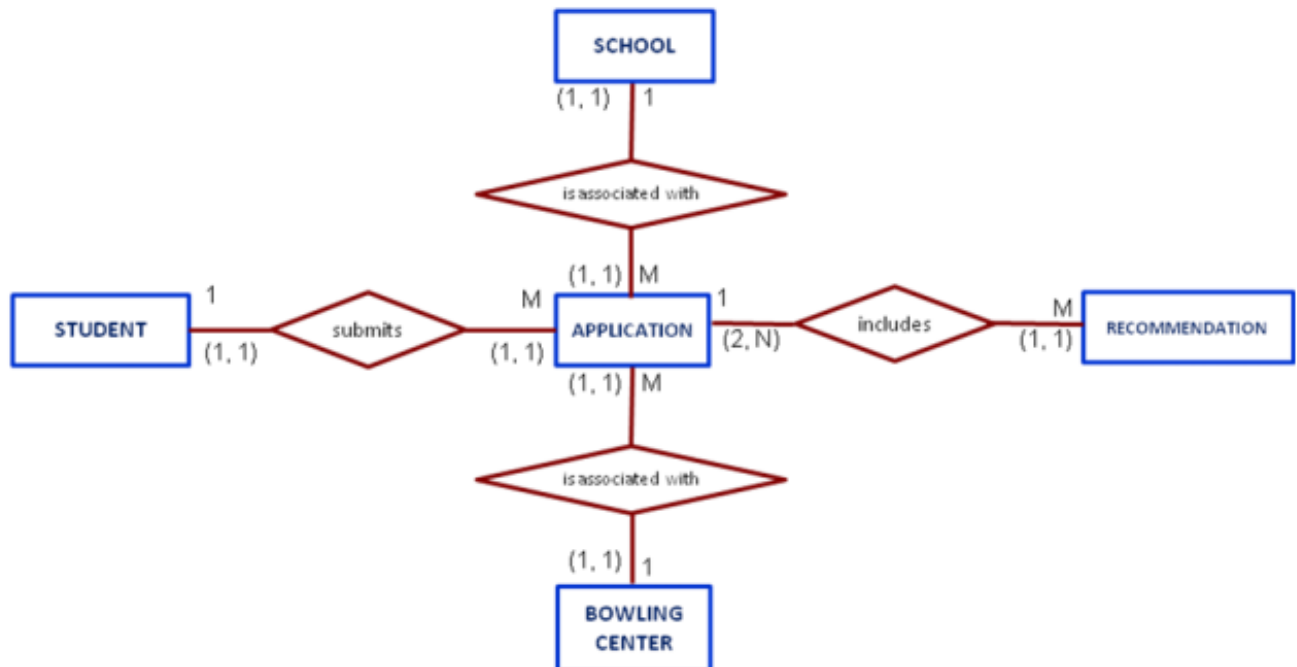
Using the business rules below, create and EER. Make sure to create two subtypes for the student and application entities. Create unique attributes for each subtype identified. Save the file as Tech1\_fullname. Take screenshots of your answers as well and paste below. Save this document as Tech1Document\_fullname.

Tech1\_fullname and Tech1Document\_fullname should be submitted in canvas.

BUSINESS RULES

A bowling center has opened its services to universities. In order for the students of the university to avail its services, they should be recommended by their respective universities. Create an ERD for the following business rules. No need to write the attributes of the entities, just the entity and their relationships with other entities. Label also the relationship type and its cardinalities.

Each applicant can submit one or more applications (one application per year for multiple years). Each application is submitted by only one applicant. Each school can be associated with one or more applications. Each application is associated with only one school. Two or more application must include at least one or more recommendations. Each recommendation is included with at least two applications. Each bowling center can be associated with one or more applications. Each application is associated with only one bowling center.



COPY AND PASTE YOUR SCREENSHOTS BELOW

