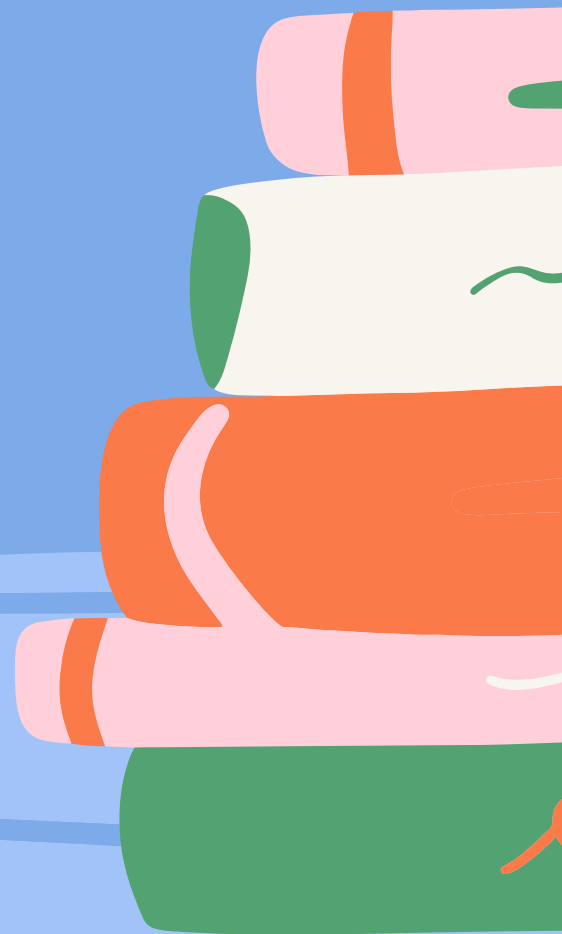


EDUC 80

Assessment
in
Learning 2



1. This is what we asked and answer.

a. Test

b. Assessment

c. Measurement

d. Evaluation





2. These are the outcomes the teaching wants her students to attain or acquire from her teaching.

a. Objective

b. Evaluation

c. Assessment

d. Learning targets

3. This method of assessment is appropriate for marking students according to the quality of their student answer.

- a. Test**
- b. Oral Examination**
- c. Observation**
- d. Self-reports**



4. Mrs. Hargreeves asked her students to design and conduct an experiment. What type of Performance Task is this?

a. Restricted-Type Performance Task

b. Extended-Type Performance Task

c. Process-oriented Performance-Based Assessment

d. Product-oriented Performance-Based Assessment



5. Mr. Wilson assigned his students to make an essay about the importance of "wika". What type of performance task is this?

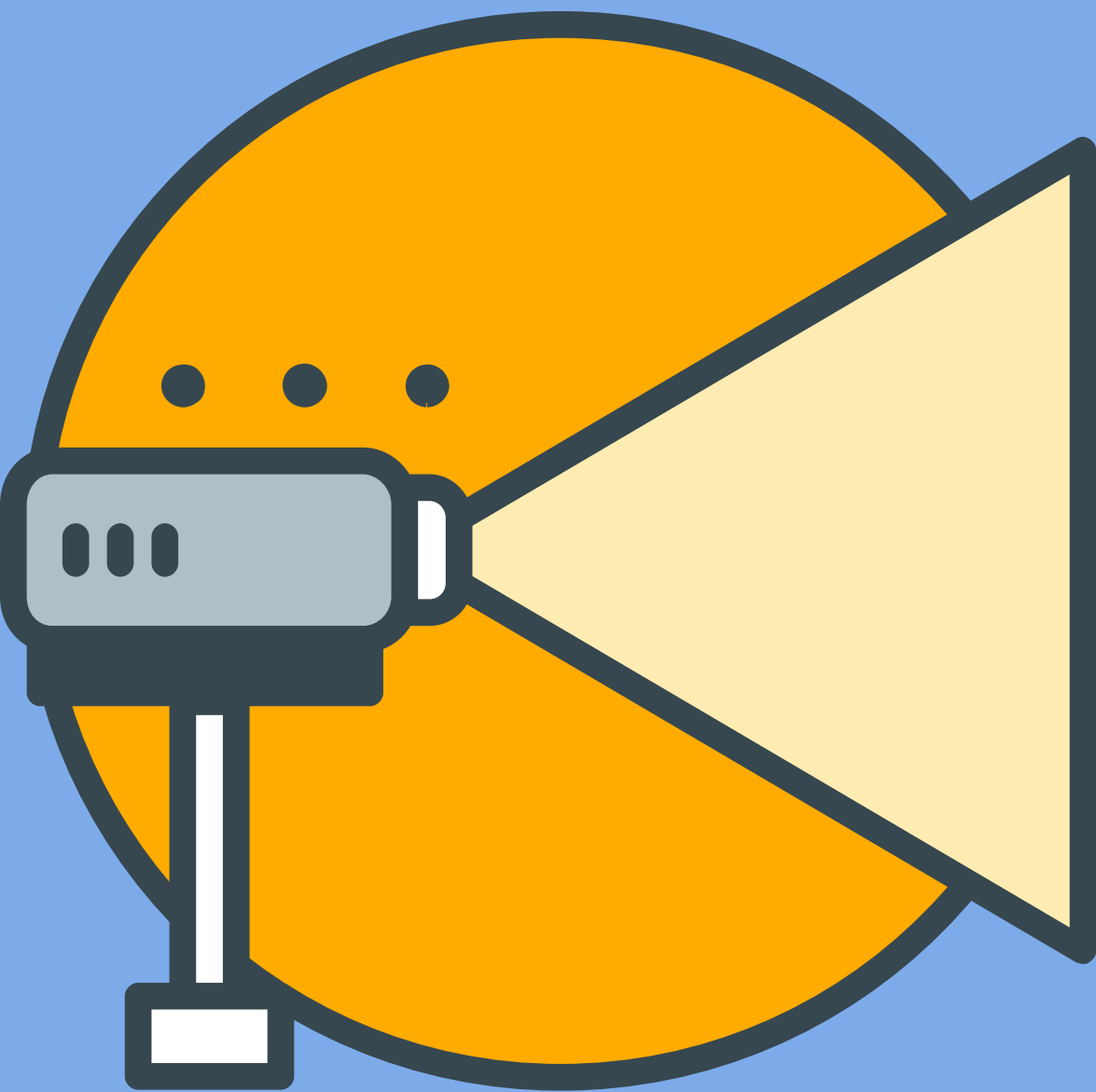
a. Restricted-Type Performance Task

b. Extended-Type Performance Task

c. Process-oriented Performance-Based Assessment

d. Product-oriented Performance-Based Assessment

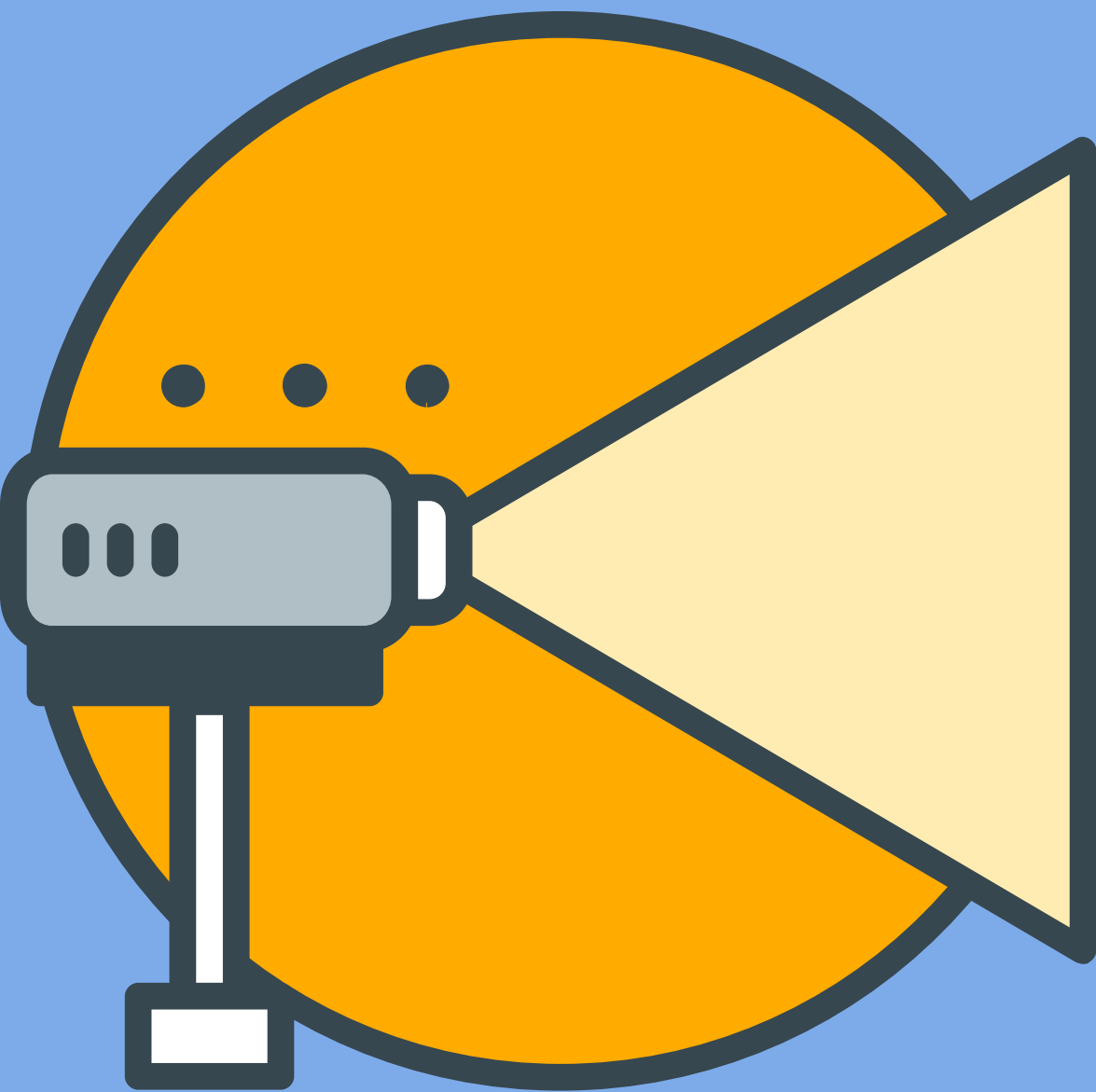




6. Ms. Maximoff is comparing measurement from evaluation. Which statement explains the difference?

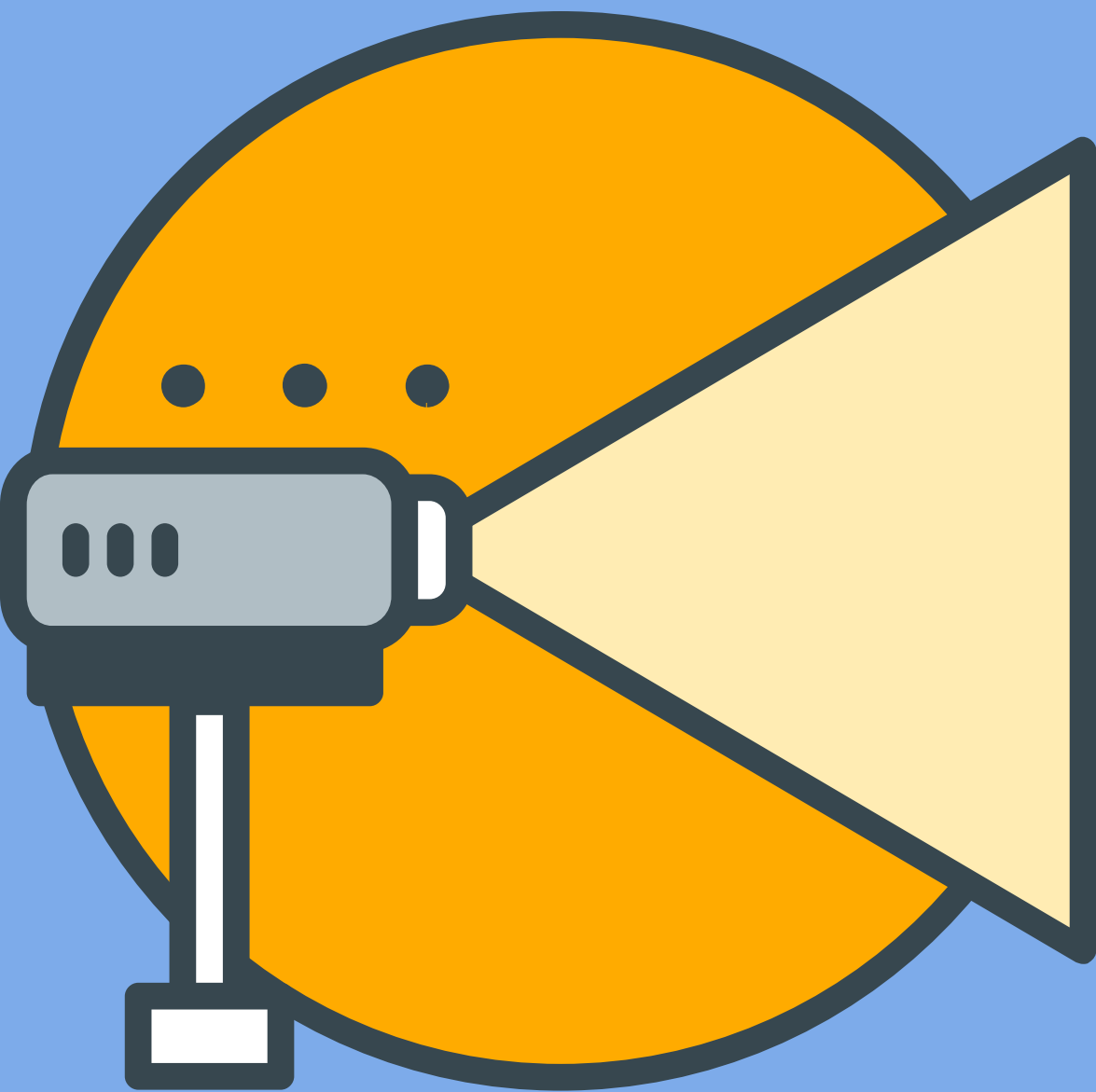
- a. Measurement is assigning a numerical value to a given trait while evaluation is giving meaning to the numerical value of the trait.**
- b. Measurement is the process of gathering while evaluation is the process of quantifying the data gathered.**
- c. Measurement is the process of quantifying data while evaluation is the process of organizing data.**
- d. Measurement is a pre-requisite of assessment while evaluation is the pre-requisite of testing**





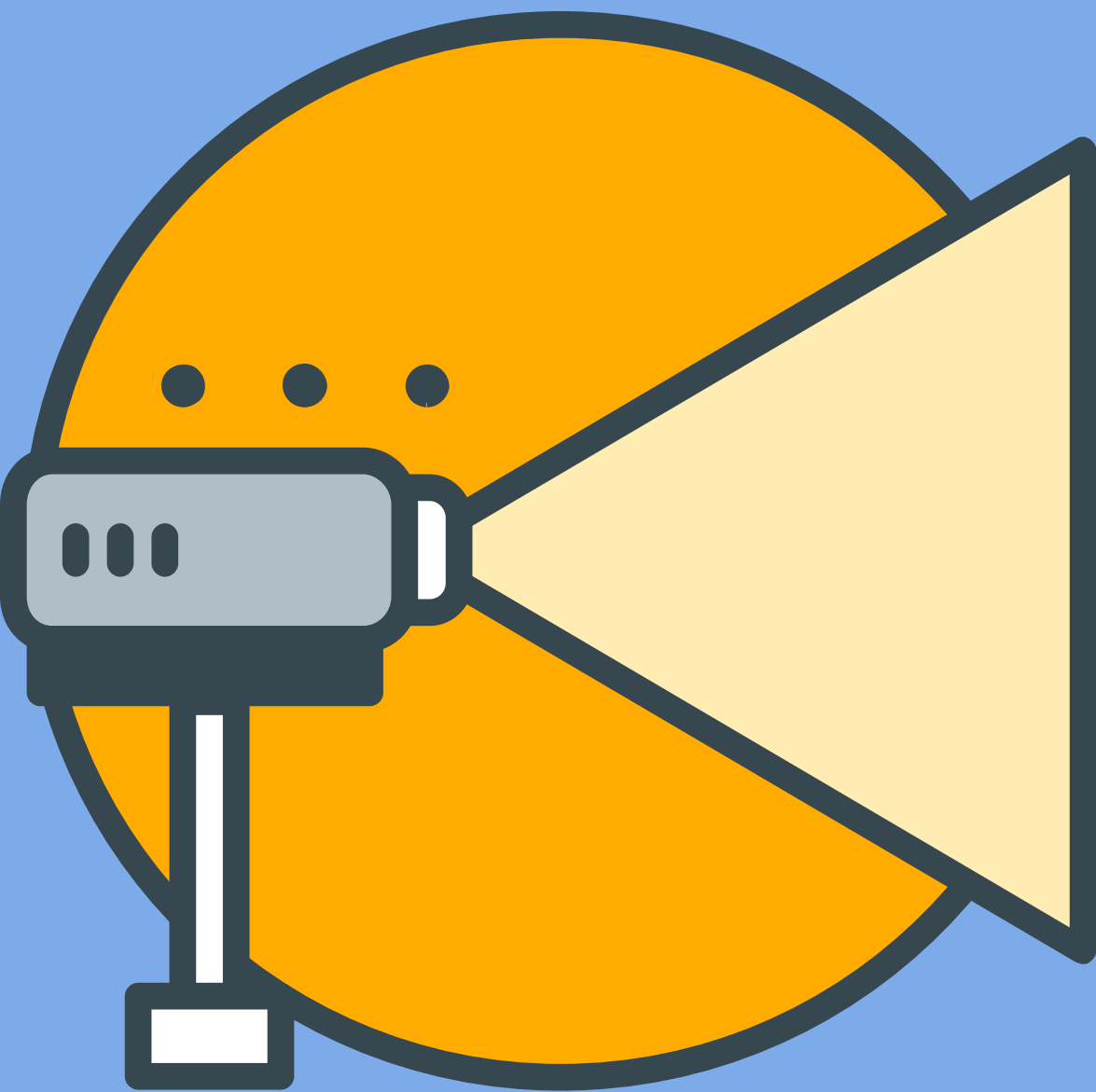
7. Mr. Barnes uses alternative methods of assessment. Which of the following will she not likely use?

- a. Multiple Choice Test**
- b. Reflective Journal Writing**
- C. Oral Presentation**
- d. Developing Portfolio**



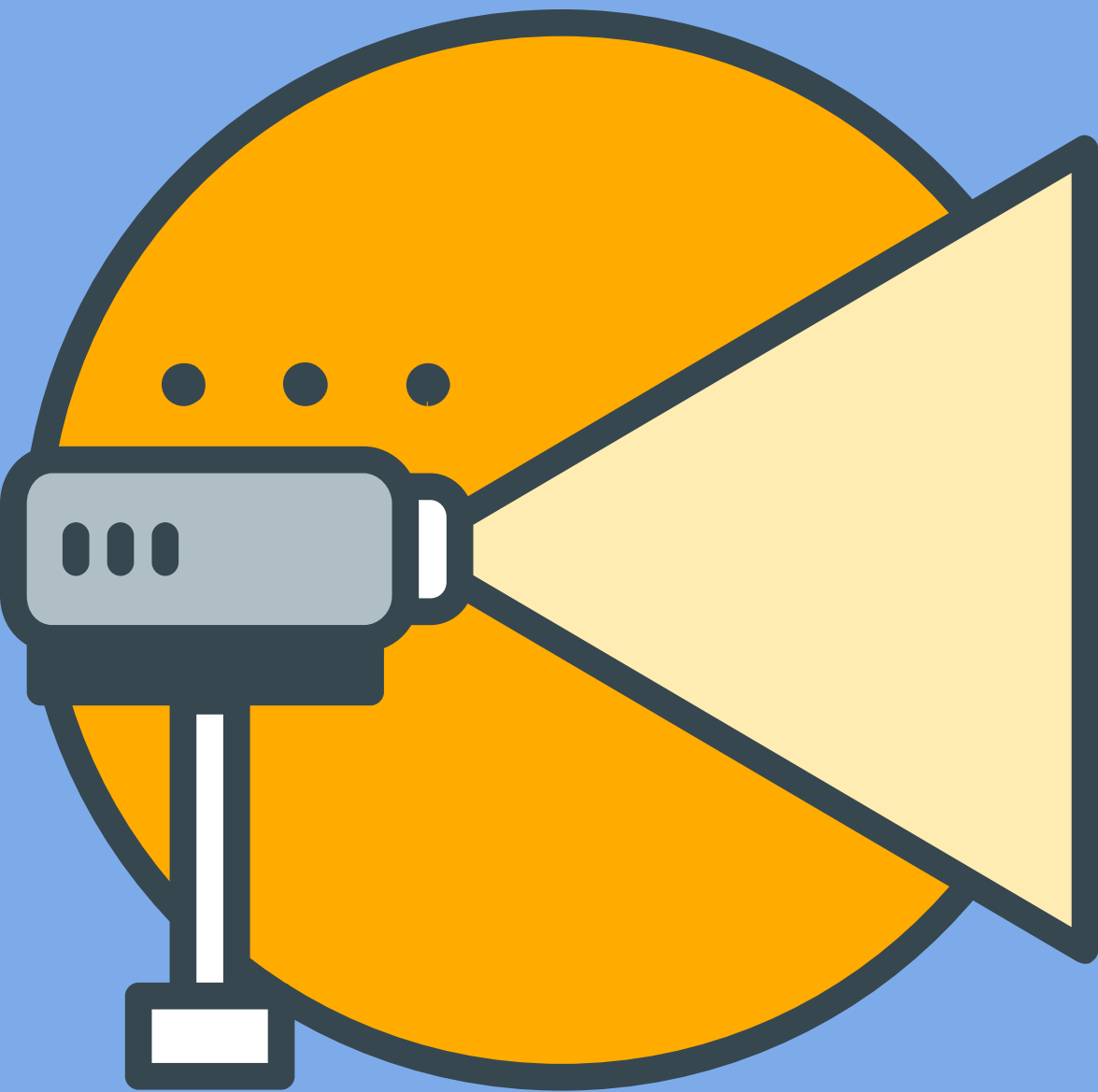
8. Mr. Laufeyson aims to measure a product of learning. Which of these objectives will she most likely set for her instruction?

- a. Show positive attitude towards learning**
- b. Identify common nouns in a reading selection**
- c. Construct a paragraph using common nouns**
- d. User a common noun in a sentence**



9. The students of Mr. Stark are very noisy. To keep them busy, they were given any test available in the classroom and then the results were graded as a way to punish them. Which statement best explains if the practice is acceptable or not?

- a. The practice is acceptable because the students behaved well when they were given a test.**
- b. The practice is not acceptable because it violates the principle of reliability.**
- c. The practice is not acceptable because it violates the principle of validity.**
- d. The practice is acceptable since the test results are graded.**



10. Ms. Harkness advocates assessment for learning. Which will she NOT likely do?

- a. Formative Assessment**
- b. Diagnostic Assessment**
- c. Placement Assessment**
- d. Summative Assessment**

11. Which of the following assessment procedures/tools is useful in assessing social relation skills?

- a. Anecdotal record**
- b. Attitude scale**
- c. Peer appraisal**
- d. any of the above**



12. Mr. Umayam is doing a performance-based assessment for the day's lesson. Which of the following will most likely happen?

- a. Students are evaluated in one sitting.**
- b. Students do an actual demonstration of their skill.**
- c. Students are evaluated in the most objective manner.**
- d. Students are evaluated based on varied evidences of learning**



13. Mrs. Pua is judging the worth of the project of the students in her Science class based on a set of criteria. What process describes what she is doing?

- a. Testing**
- b. Measuring**
- c. Evaluating**
- d. Assessing**



14. Mrs. Bacani prepared a rubric with 5 levels of performance described in 5-excellent, 4-very satisfactory, 3-satisfactory, 2 needs improvement, 1-poor. After using this rubric with these descriptions, she found out that most of her students had a rating of 3. Even those who are evidently poor in their performance had a rating of satisfactory. Could there be a possible error in the use of the rubric?

- a. Yes, the teacher could have committed the generosity error.
- b. Yes, the teacher could have committed the central tendency source of error.
- c. No, it is just common to see more of the students having grade of 3 in a 5-point scale.
- d. No, such result is acceptable as long as it has a positive consequence to the students.



15. Which is a good portfolio evidence of a student's acquired knowledge and writing skills?

a. Project

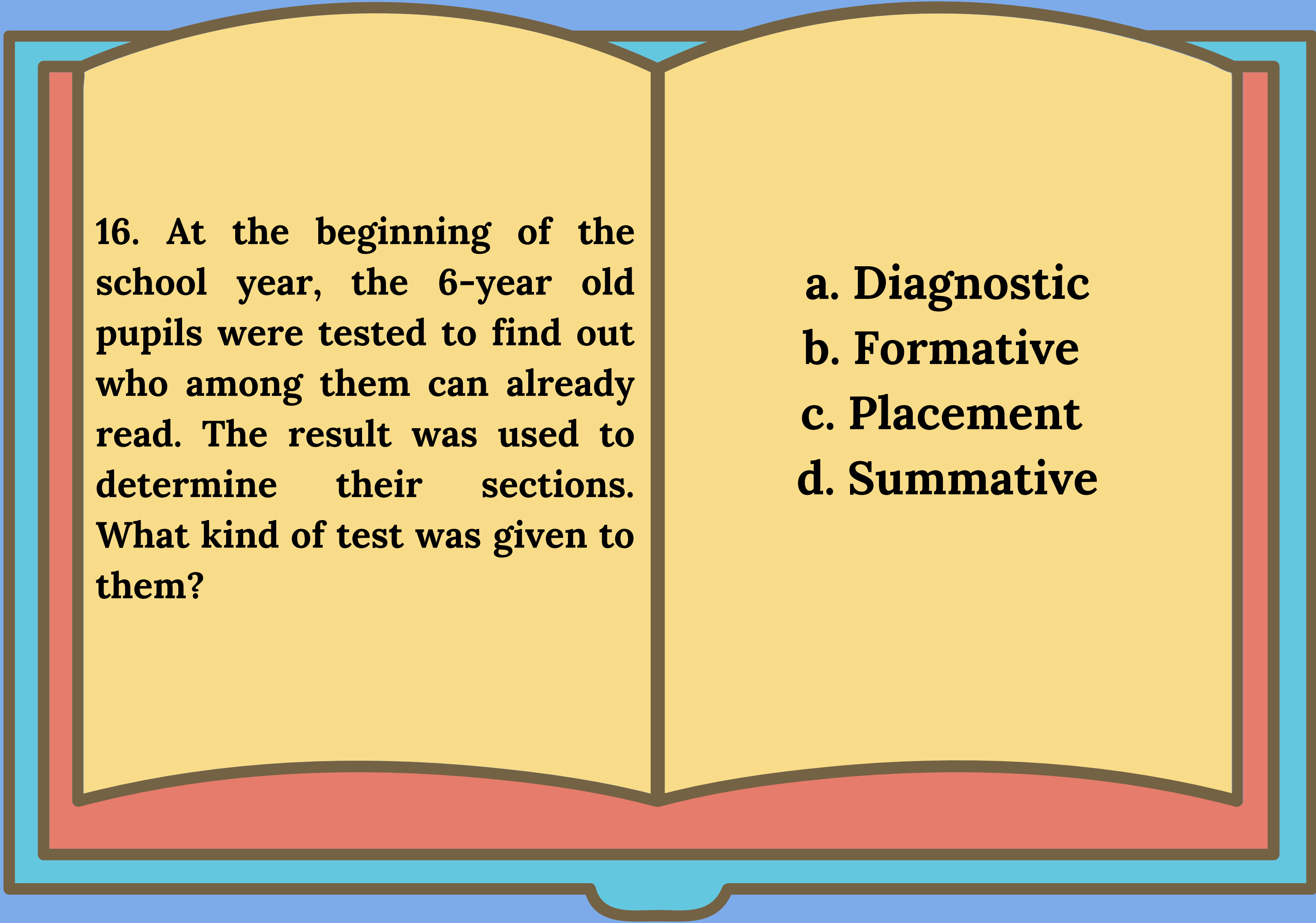
b. Test Results

c. Reflective Journal

d. Critiqued Outputs







16. At the beginning of the school year, the 6-year old pupils were tested to find out who among them can already read. The result was used to determine their sections. What kind of test was given to them?

- a. Diagnostic
- b. Formative
- c. Placement
- d. Summative

17. The grade six pupils were given a diagnostic test in addition and subtraction of whole numbers to find out if they can proceed to the next unit. However, the results of the test were very low. What should the teacher do?

- a. Proceed to the next lesson to be able to finish all the topics in the course.**
- b. Construct another test parallel to the given test to determine the consistency of the score.**
- c. Count the frequency of errors to find out the lessons that the majority of students need to relearn.**
- d. Record the scores then inform the parents about the very poor performance of their child in Mathematics.**

18. Mr. Abriol is doing an assessment of learning.

At what stage of instruction should he do it?

a. Before instruction

b. After instruction

c. Prior to instruction

d. During instruction

19. Ms. Dorethe developed an achievement test in Filipino for her grade three pupils. Before she finalized the test, she examined carefully if the test items were constructed based on the competencies that have to be tested. What test of validity was she trying to establish?

- a. Content validity**
- b. Concurrent validity**
- c. Predictive validity**
- d. Construct validity**

20. Mr. Robles wants to establish the reliability of his achievement test in English. Which of the following activities will help achieve his purpose?

a. Administer two parallel test to different groups of students.

b. Administer two equivalent test to the same groups of students.

c. Administer a single test but two different groups of students.

d. Administer two different tests but to the same groups of students.

