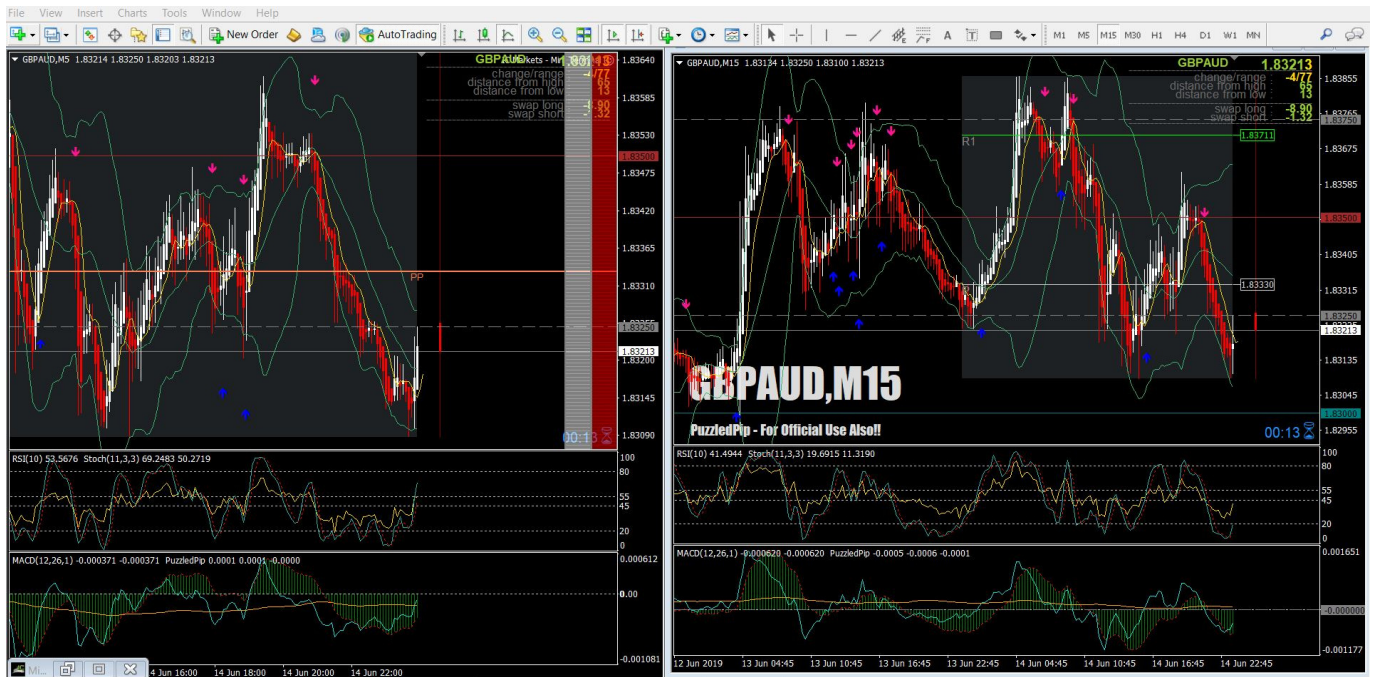


PUZZLEDPIP

This Module will help a trader to create the chart of PuzzledPip

This is the MAIN VIEW of the CHART



5m TF and 15m TF is side by side. Our screen is different so be mindful of the MACD at the lower part of the chart, this may also mislead you for the flow of the trend.

To Start

Copy all the indicator

1. Open MT4
2. click FILE > Open Data Folder
3. Another folder will show up Locate and open MQL4

Name	Date modified	Type	Size
config	11/06/2019 6:07 PM	File folder	
history	04/06/2019 2:46 PM	File folder	
logs	15/06/2019 1:19 A...	File folder	
MQL4	26/04/2019 9:51 PM	File folder	
profiles	28/05/2019 12:48 ...	File folder	
templates	14/06/2019 11:52 ...	File folder	
tester	26/04/2019 9:42 PM	File folder	
DetailedStatement	10/06/2019 6:38 PM	GIF File	6 KB
DetailedStatement	10/06/2019 6:38 PM	Chrome HTML Do...	26 KB
origin	26/04/2019 9:40 PM	Text Document	1 KB

4. Open INDICATOR folder

Name	Date modified	Type	Size
Experts	26/04/2019 9:43 PM	File folder	
Files	26/04/2019 10:05 ...	File folder	
Images	26/04/2019 9:40 PM	File folder	
Include	26/04/2019 9:40 PM	File folder	
Indicators	14/06/2019 6:38 PM	File folder	
Libraries	26/04/2019 9:43 PM	File folder	
Logs	15/06/2019 11:40 ...	File folder	
Presets	26/04/2019 9:40 PM	File folder	
Projects	26/04/2019 9:40 PM	File folder	
Scripts	26/04/2019 9:40 PM	File folder	
Shared Projects	26/04/2019 9:51 PM	File folder	

5. Paste the INDICATOR

6. CLOSE ALL THE OPEN APPS, CLOSE MT4, in order to refresh the indicator

7. After closing the MT4, if you are using icmarket you can install MT4 ADD ON, be sure that your MT4 is not running before installing it. To install just double click it and RUN the INSTALLER. When done click FINISH or OK.

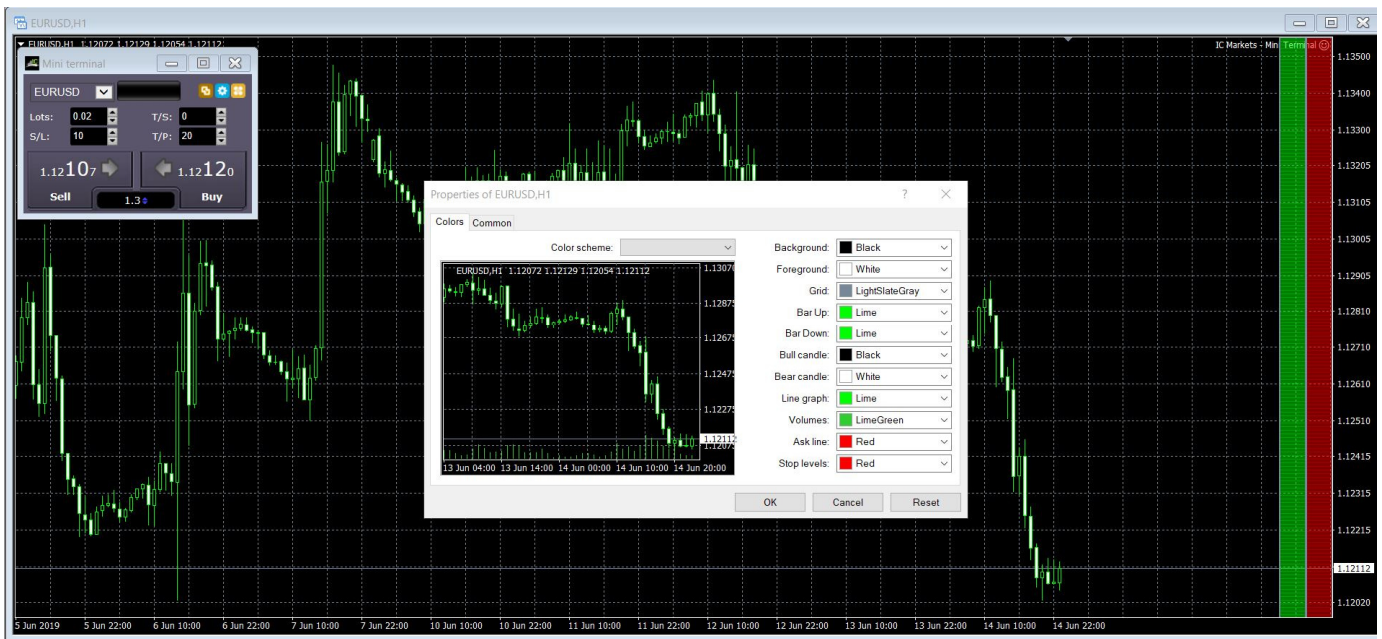
Once you open your MT4 this should be the look



The Mini Terminal on the Upper Left corner nakuha yan sa ADD ON installer.

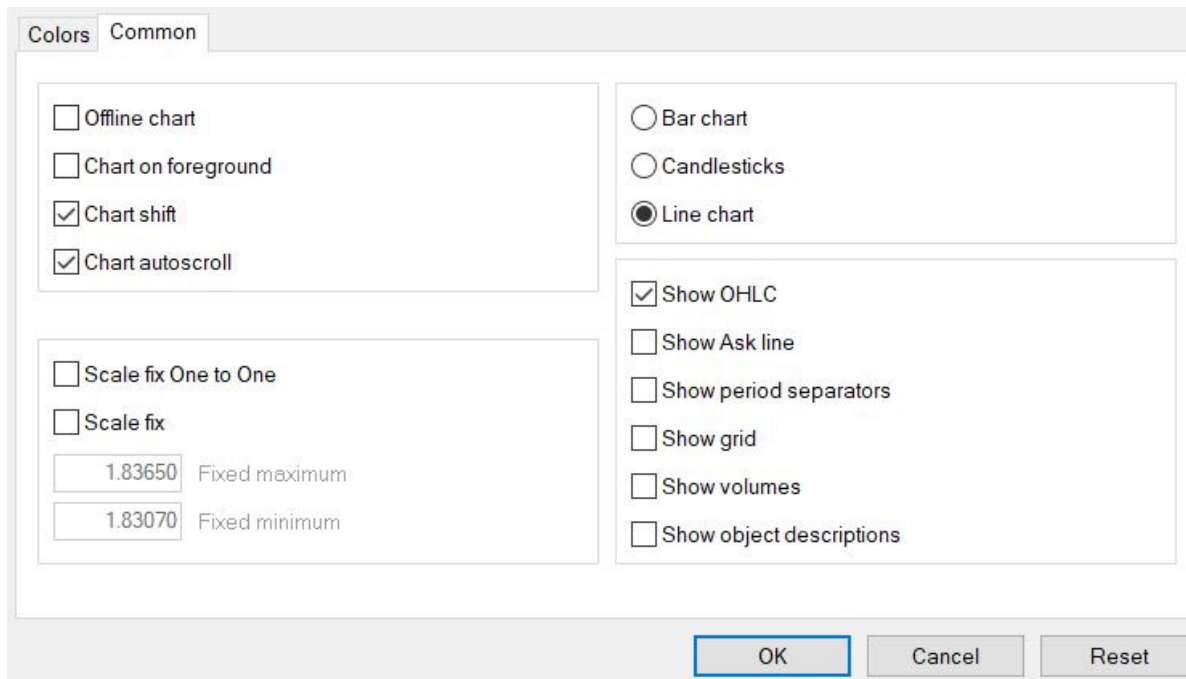
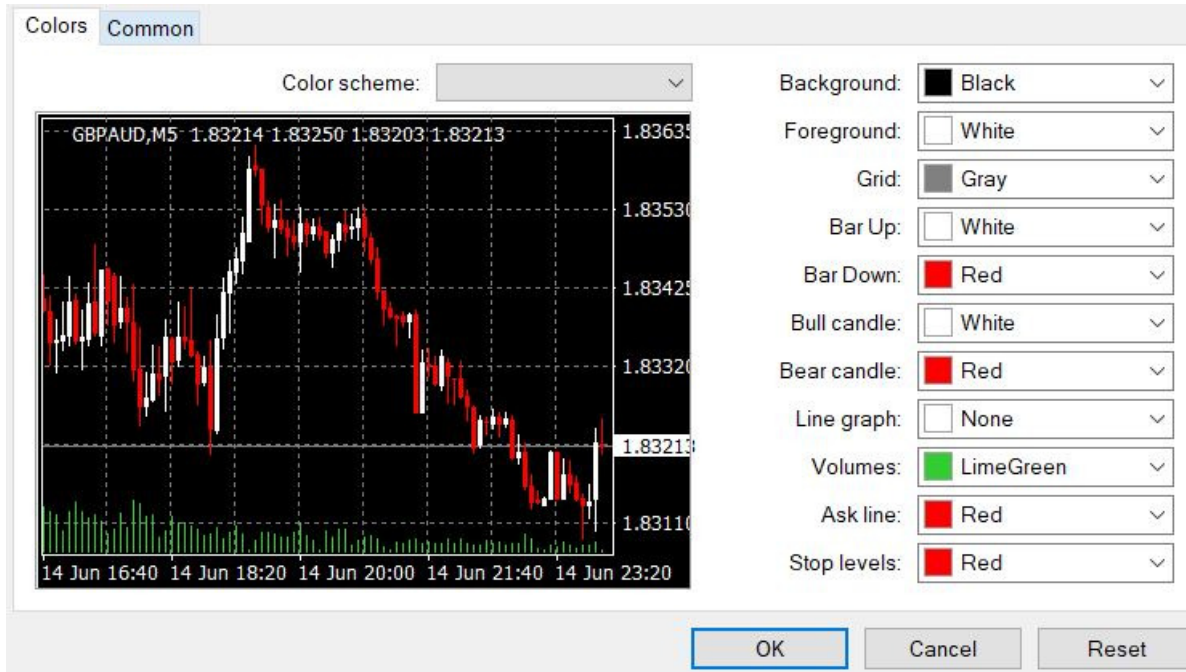
First we will edit the PROPERTIES of the CHART

Right Click on the Chart and CLICK PROPERTIES on the LOWER TAB.



I am using Heiken Ashi candle because I can see the early sign or reversal on this candle. Once na ang candle lumiit reversal na yan or doji on 5m TF reversal yan.

This is how I Edit.

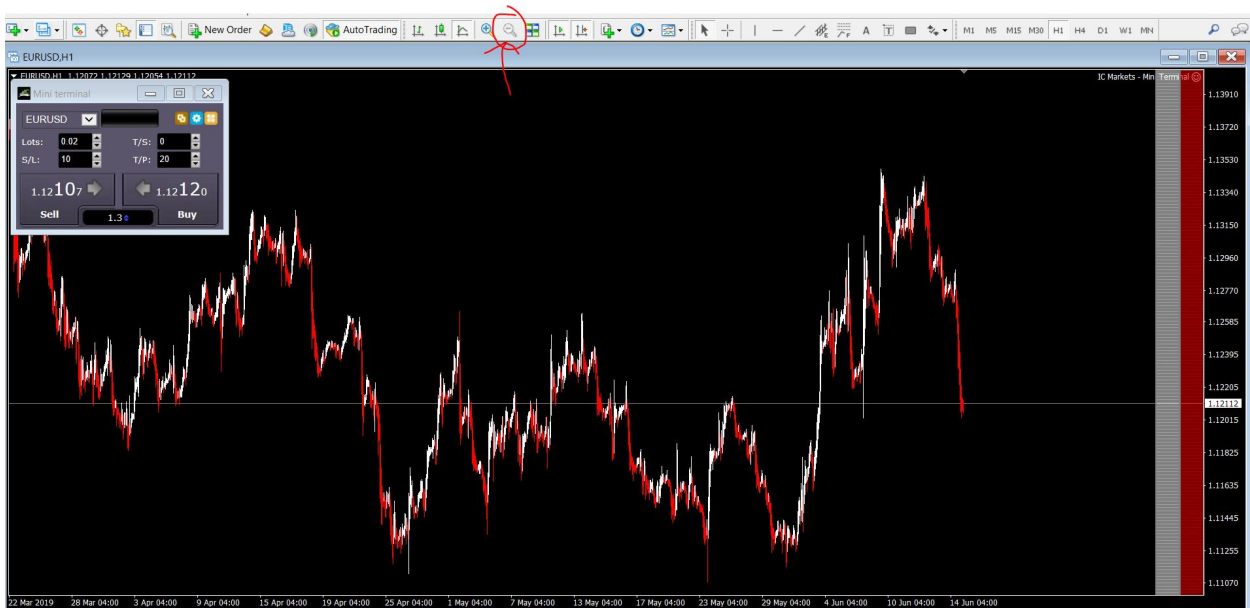


Please bear in mind that you should insert HEIKEN ASHI indicator. To do it Click INSERT > INDICATORS> CUSTOM> HEIKEN ASHI

This should be the New Look of your chart Now.



We can now adjust the zoom. To adjust click the maximum zoom out



And CLICK twice or 2 times on zoom in



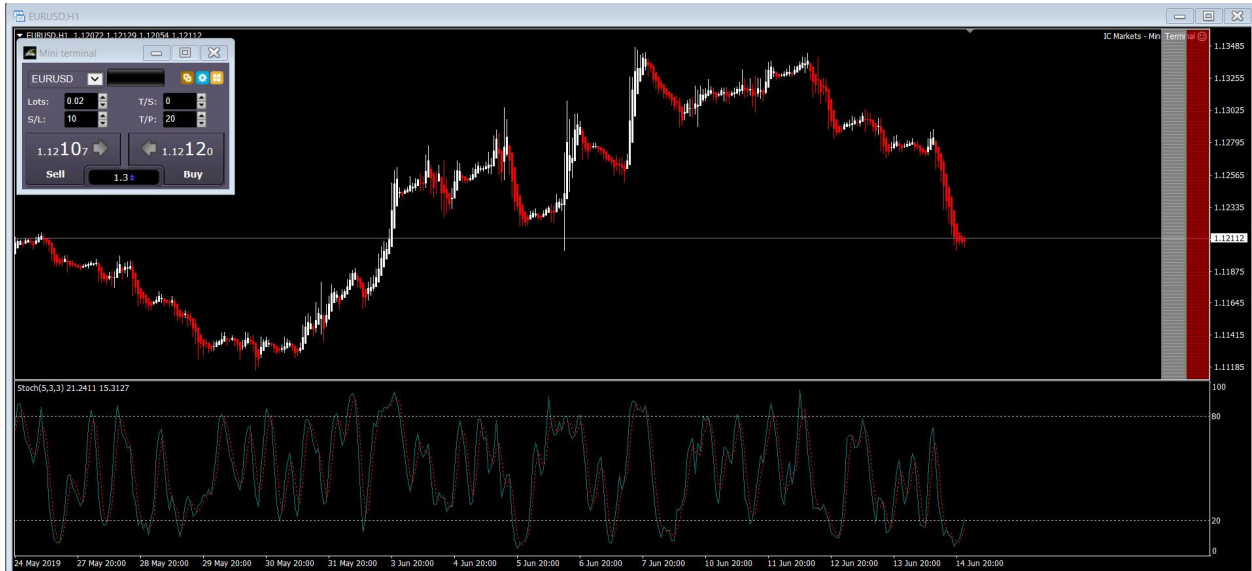
We will now proceed on RSI and STOCHA, kahit alin mauna. To do it Click INSERT > INDICATORS> OSCILLATORS> Stochastic Oscillator

The screenshot shows the "Stochastic Oscillator" dialog box with the "Parameters" tab selected. The "Main" color is set to "Teal" and the "Signal" color is set to "Red". The "Levels" and "Visualization" tabs are also visible. The "OK", "Cancel", and "Reset" buttons are at the bottom.

The screenshot shows the "Stochastic Oscillator" dialog box with the "Levels" tab selected. The "Level" is set to 20 and the "Description" is empty. The "Style" is set to "Silver". The "Add" and "Delete" buttons are visible. The "OK", "Cancel", and "Reset" buttons are at the bottom.

Be mindful of the Levels, and SIGNAL is RED, this is useful.

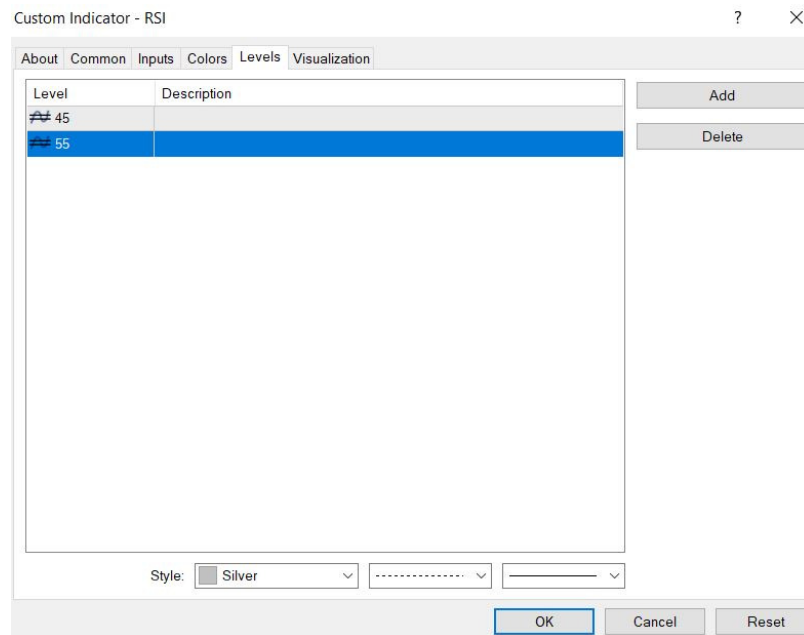
Now, this is our view.



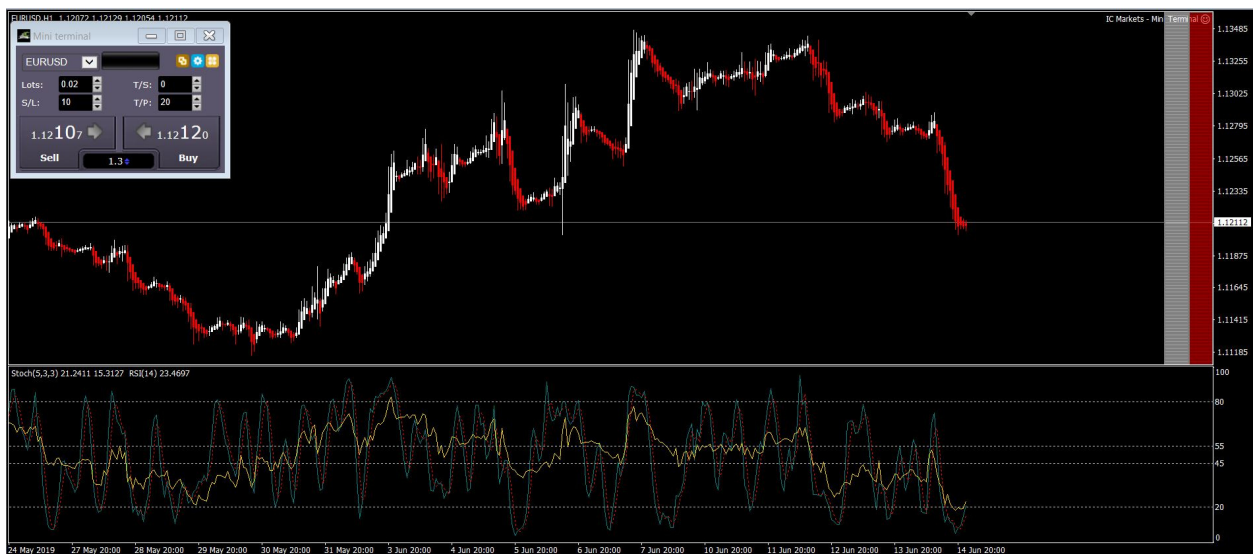
To put the RSI we will drag it to merge on stocha. To do it click VIEW> NAVIGATOR, you can see your left panel of the chart there is INDICATOR, just click the + sign in order to find the RSI.



Locate the RSI click it and Drag it to the location of Stocha. Once you drag it, edit the color make it GOLD, and levels 45 and 55

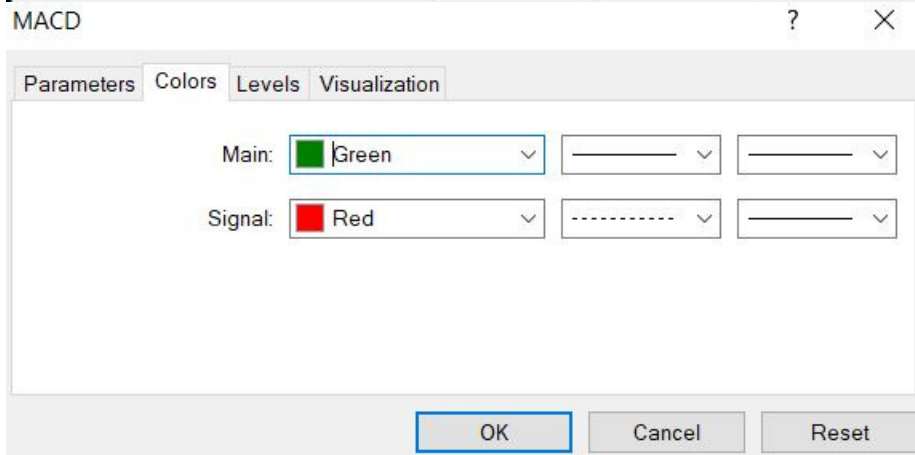
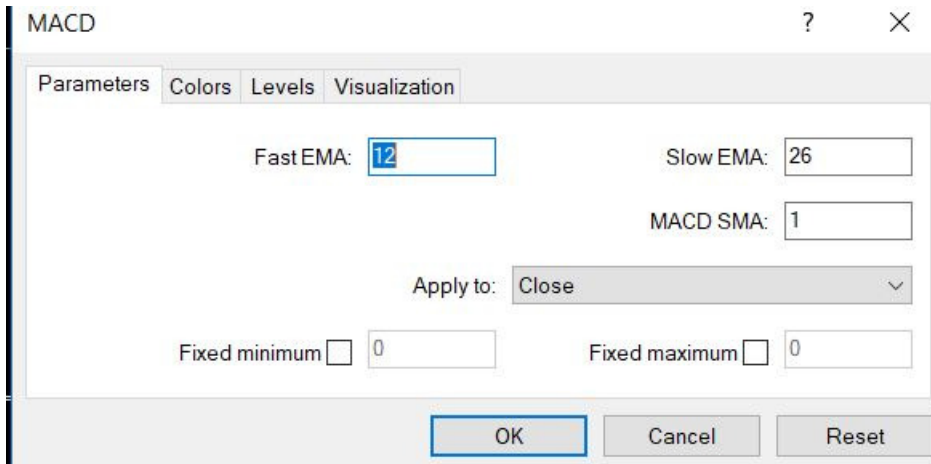


This will be the new look of our CHART



Next is the MACD our power indicator. Just click Insert> Indicators> Oscillators>MACD

Edit the parameters to 12 26 1 then Color GREEN and RED



And Click Ok. Then This will be the look.



Now we will now add the PuzzledPip Magic Indicator, the Tipu MACD. We will add this by dragging it kagaya kng pano natin ginawa si RSI. Sa VIEW> NAVIGATOR> TIPU MACD then drag it to MACD.

Be mindful of the parameters.

Custom Indicator - Tipu MACD ? X

About Common **Inputs** Colors Levels Visualization

Variable	Value
MACD Mode	Lines
FastEMA Period	4
Slow EMA Period	12
Signal SMA Period	100
Applied Price	Close price
Signal Types	---Signal Types-----
Mark Buy/Sell Signals	Arrows
Arrow offset (pips)	5
Up Color	31,159,192
Down Color	230,77,69
Zero Line Cross	false
Main Signal Cross	true
Global Alert Settings	---Buy/Sell Global Alert Settings-----
Alert i	1
Alert Mobile	false
Alert Onscreen	true
Alert Email	false



This is our Final look. You can add more indicator depending on your trading strategy and style.

You can ADD daily data, Pivot, etc.

Thank you Very Much and more PIPs for us mga Pinoy!!!