

[Home](#) [About Us](#) [Contact](#) [Sitemap](#) [Privacy Policy](#)



# ANDROIDCRIBS

## Arena of Android Roms, Games and Apps

Androidcribs

### BREAKING NEWS

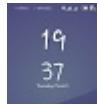
[VIEW ALL >](#)



[ROM] MIUI V7  
For Cherry Mobile  
Flare S3 Octa



[ROM] Lenovo  
A369i Galaxy S5  
Custom Rom



[ROM] XPERIA  
ZVI+ For  
Symphony P6



[ROM] Miui  
v.6.4.2 >  
Lenovo A369i



**How to fix**

**Deadboot/hardbrick/  
Bootloop**

[Home](#) > [Cherry Mobile](#) > [Deadboot](#)

---

# How to Fix Bootloop/Hardbrick of CherryMobile Flare 4

12  [Papajack Gemperle](#)  Tuesday, January 19, 2016

---

## Tutorial on how to Fix Bootloop/Hardbrick of CherryMobile Flare 4

### How to Fix Bootloop/Hardbrick of CherryMobile Flare 4

Hi this tutorial teach you on how to fix bootloop or deadboot for the device CherryMobile Flare 4 with chipset of mt6753 running in Lollipop 5.1. This stockrom compiled by Danielle Bote has already **Rooted**. Just follow this tutorial carefully.

Note: I'm not liable for any damage for your device by proceeding this you accept any liabilities. Do it at your own risk!

#### Requirements:

[Mediatek\\_Auto\\_Drivers.zip](#)

[USB\\_VCOM\\_Driver.rar](#)

[MediaTek\\_SP\\_Flash\\_Tool\\_V5.1532.00.zip](#)

[Rooted\\_Stock\\_Rom](#)

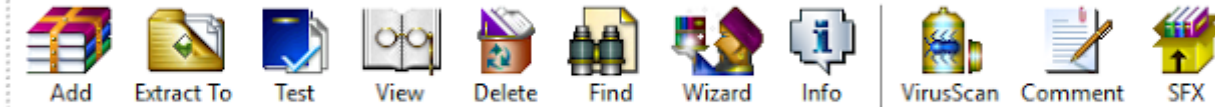
#### Instructions:

##### 1. Installing Drivers

1.) Download Mediatek Auto Installer and Extract:

Mediatek\_Auto\_Drivers.zip - WinRAR (evaluation copy)

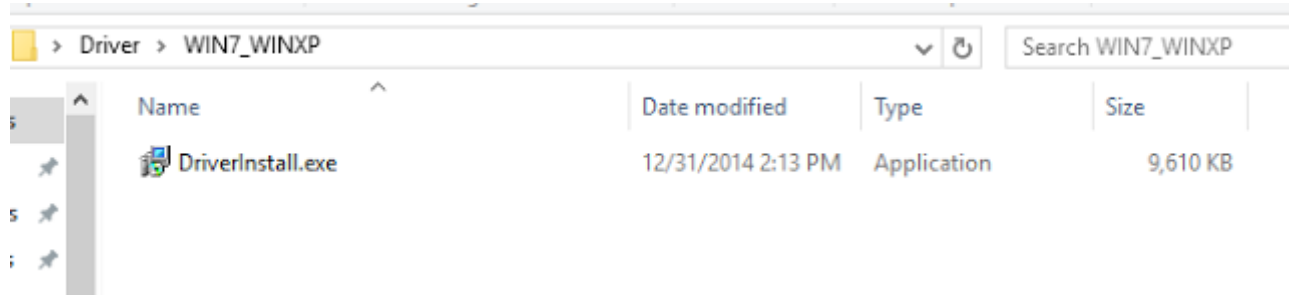
File Commands Tools Favorites Options Help



Mediatek\_Auto\_Drivers.zip\Driver - ZIP archive, unpacked size 19,709,844 bytes

Name	Size	Packed	Type	Modified	CRC32
..			File folder		
WIN_8			File folder	7/30/2015 4:40 ...	
WIN7_WINXP			File folder	7/30/2015 4:40 ...	
ReleaseNote_Dri...	33,792	7,775	Microsoft Excel 97...	12/31/2014 2:3...	7BB0FAE8

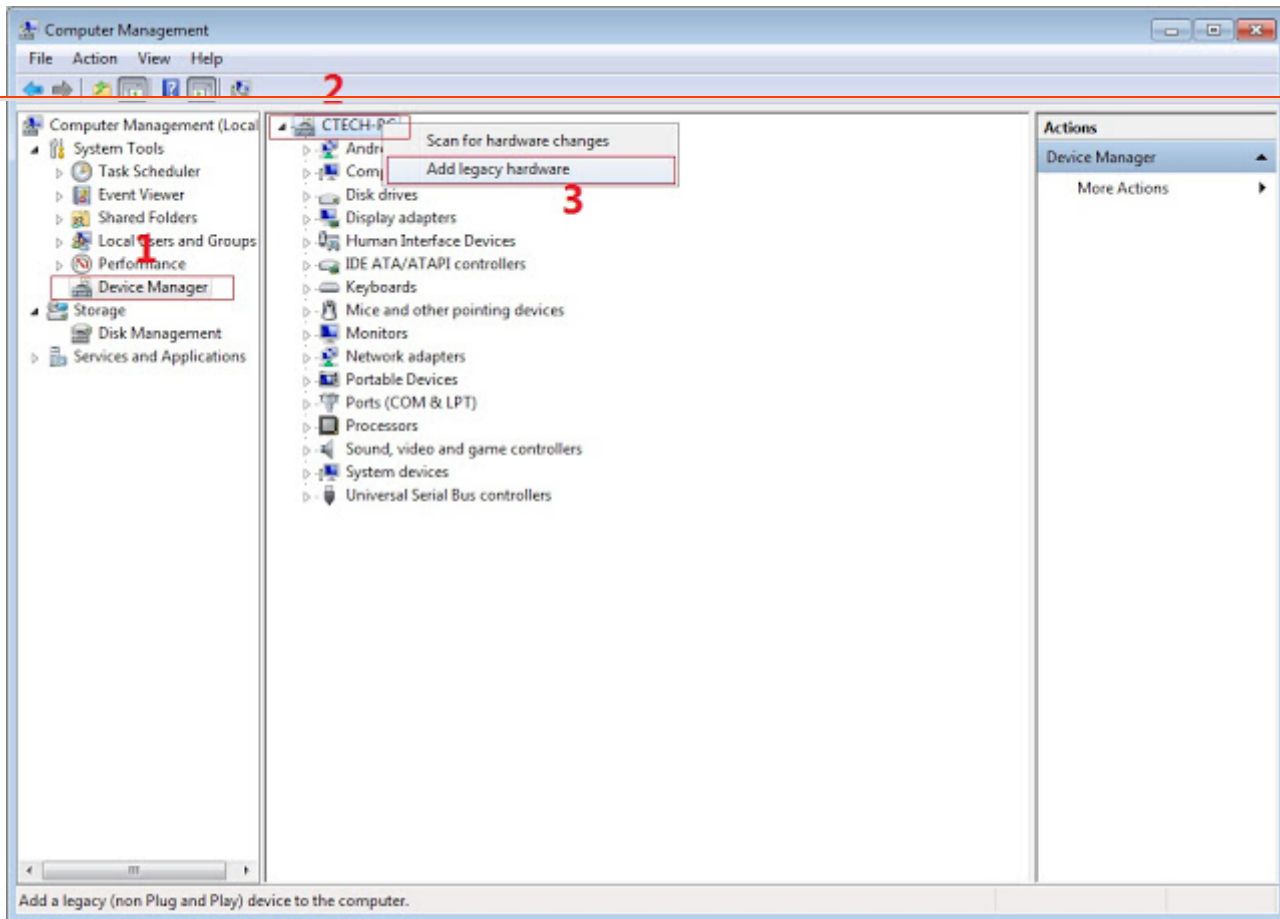
1.1) Just choose your Operating System **Win 7/Win8**



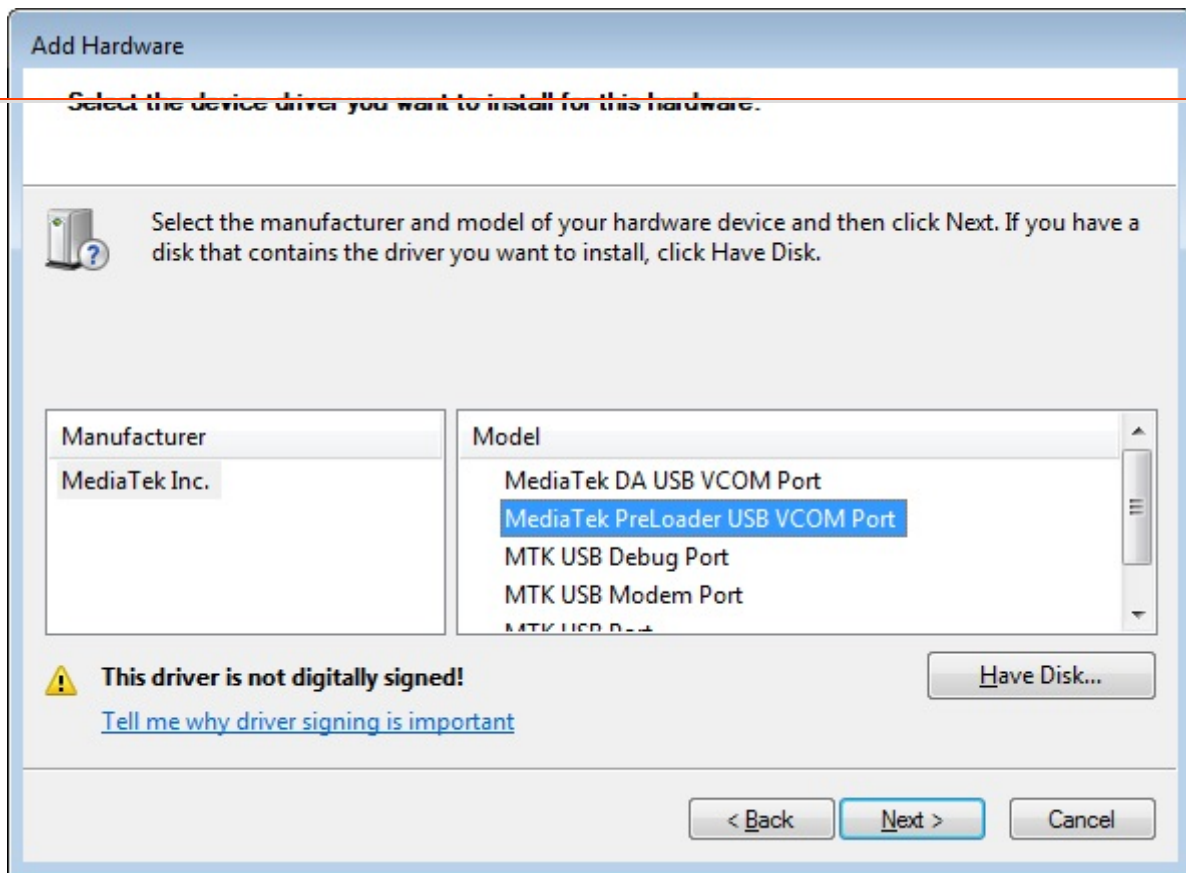
2.) For **Win 10**

Install Drivers **USB\_VCOM\_Driver.rar**

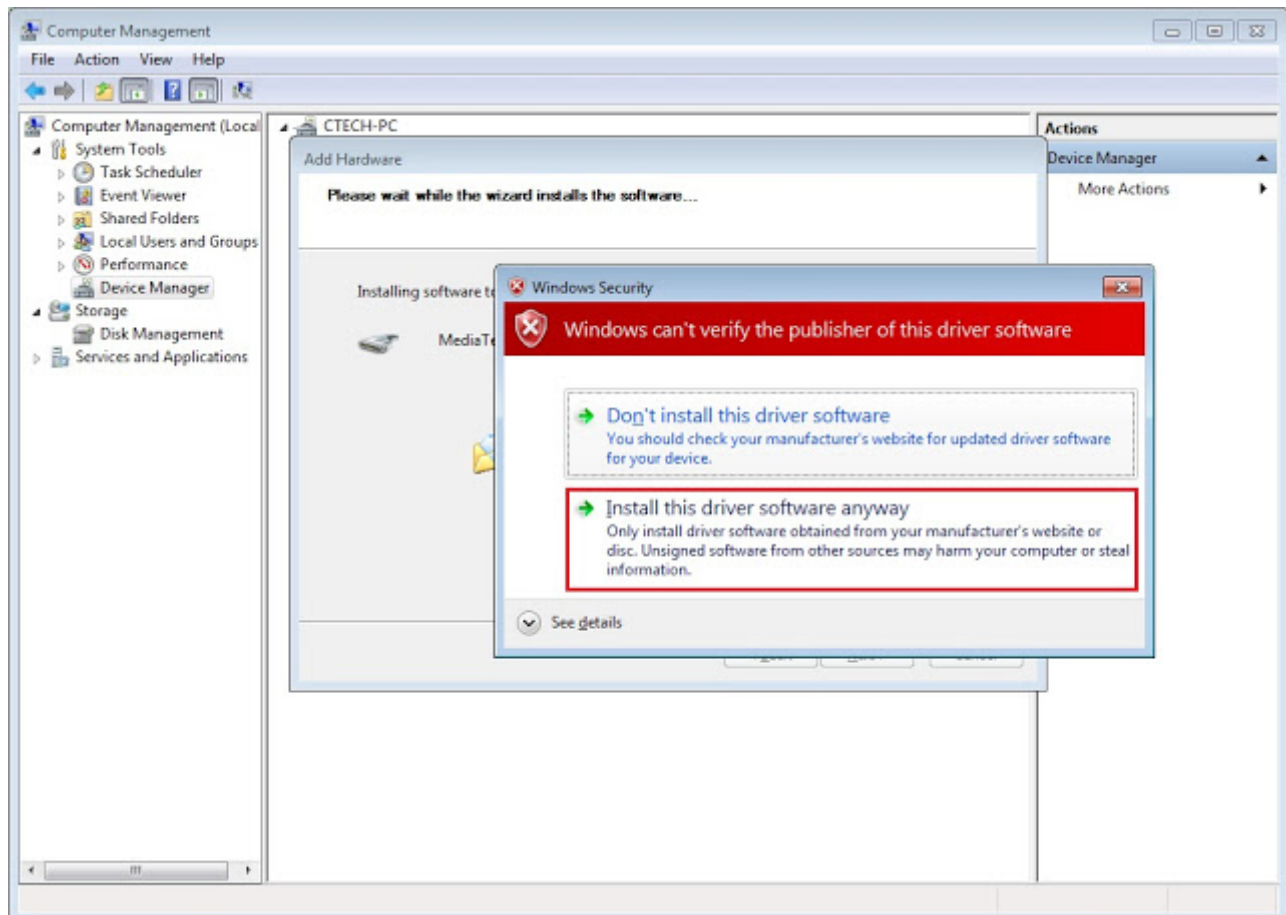
In **Device Manager** Right click on PC name(Right Side) and then click on **Add legacy hardware** as shown in image below.



Now in Add Hardware Wizard click on **Next >>**  **Install the Hardware that I manually select from a list (Advanced)** >> **Show All Devices** >> **Next >> Have a Disk**, Now select the any inf file from where you extracted the downloaded VCOM driver package.



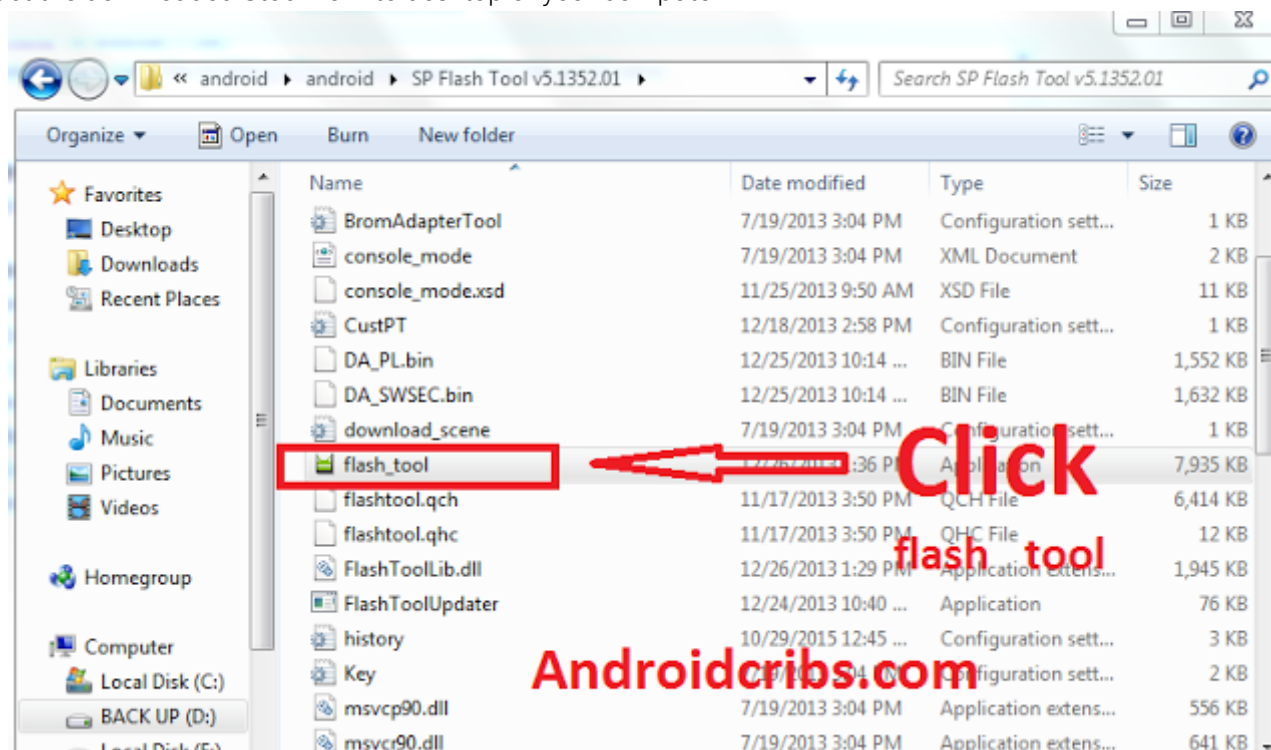
3. Now Click on Next and select **Install this driver software anyway** and wait for finishing the process.



4. After installation is finished then Restart your computer, That's it.

5. Open **flash\_tool.exe**, click on the Download Tab

Extract the downloaded Stock rom to desktop of your computer.



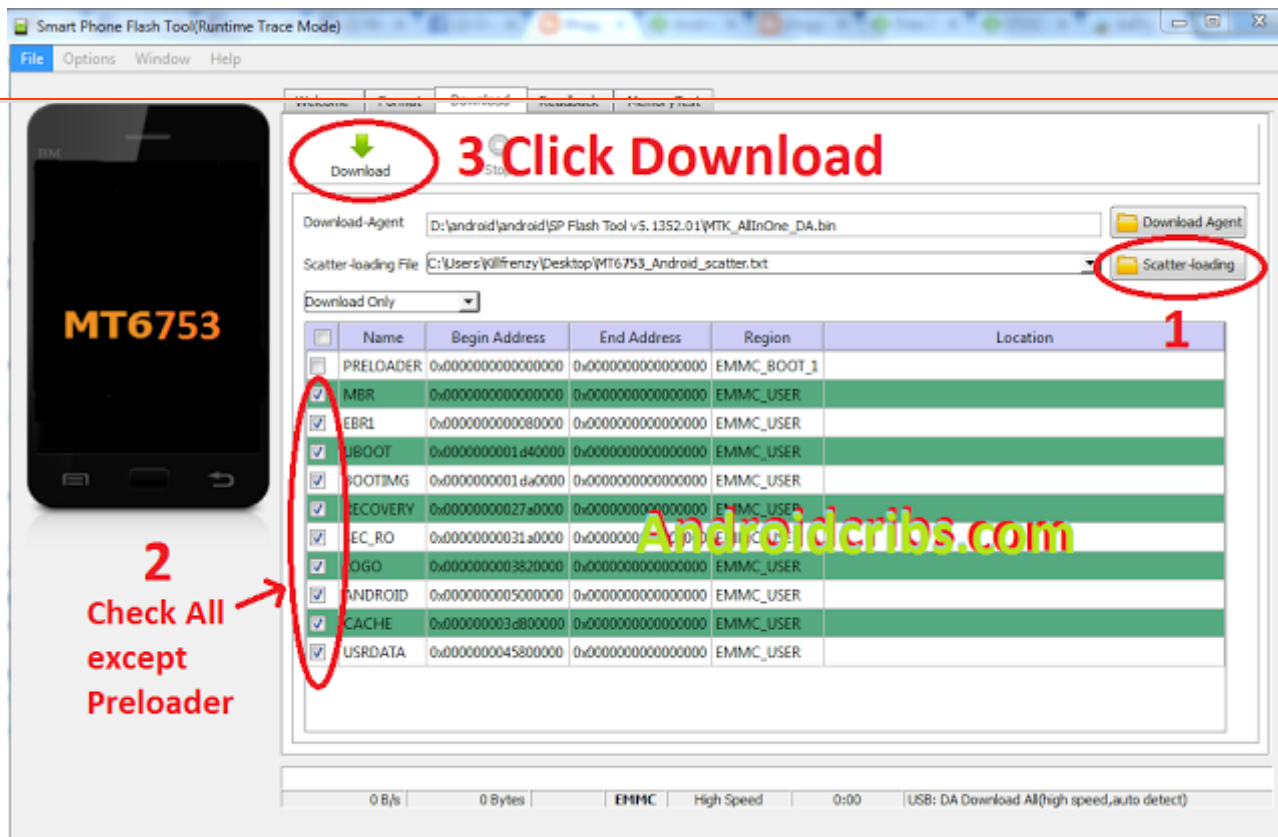
6. Click **Scatter-loading** and browse for the scatter file (**MT6753\_Android\_scatter**)

7. For **Bootloop only**

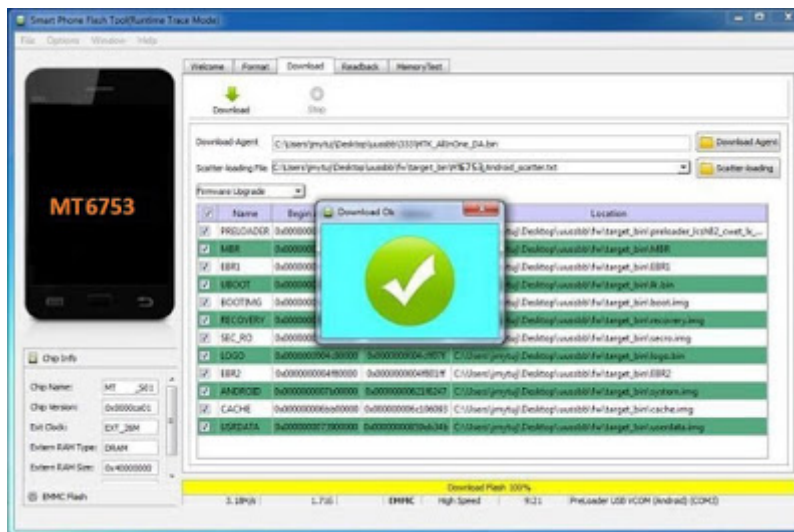
Make sure flashing mode is set to "**Download Only**" and check mark all except **Preloader**.

Note: If **deadboot/hardbrick** set "**Download+Format**" and check **Preloader**.

8. Click **Download**.



- 9. Turn off your phone, connect your phone to the PC and wait for the flashing to commence.
- 10. **Green Circle image with check** will show once flashing is completed. That's it!



- 11. Disconnect your phone in USB cord then open if still bootloop then try to **factory reset** in recovery settings. To go in recovery mode reboot your phone hold and press **power on and volume up** simultaneously until recovery mode appeared.

**Special Thanks:**

**Danielle Jhay Relox Bote** for stockrom

---

**Credits:**

**Danielle Jhay Relox Bote**

Cherry Mobile Flare 4 Tech-Support

Maximum Team

<http://Androidcribs.com>

Mtkdroidtools



©2014- 2017 Androidcribs

All rights reserved. Powered by [Blogger](#)